

FOR LEASE > 9,237± SF > PROMINENT SIGNAGE

Dublin, CA

Turn-Key Fully Equipped Auto Repair



6351 DUBLIN BLVD. DUBLIN, CA

10 Bays (2 Drive-Thrus)

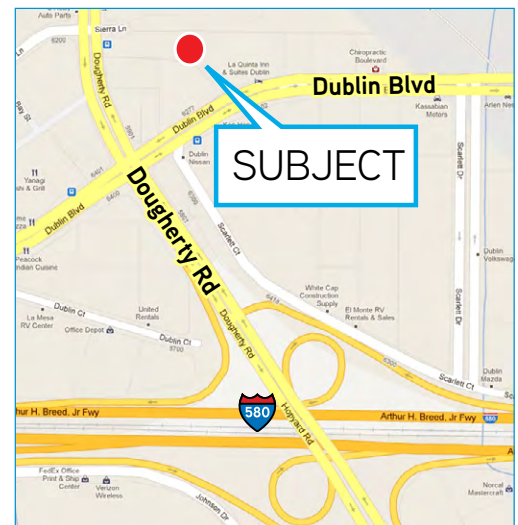


Features

- > 9,237± SF Freestanding Building Zoned for Automotive
- > 6,449± SF Ground Floor
- > 2,371± SF Mezzanine Area
- > Ceiling Height 22' 3"
- > Door Height 11' 10"
- > 3 Private Offices, Large Showroom, Storage Area, Large Training Room and Customer Lounge
- > 24 Parking Spaces
- > Very Clean Site - Currently Operating
- > Lease Rate: \$2.00 NNN
- > Nets Estimated at \$0.30

Area Tenants

- > Kragen Auto Parts
- > America's Tires
- > IHOP
- > Arlen Ness Motorcycles
- > Dublin Honda
- > Dublin Toyota



PATRIC DAVIS
 +1 925 227 6219
 patric.davis@colliers.com
 CA License No. 01193278

ROBIN NEWTON
 +1 925 279 4645
 robin.newton@colliers.com
 CA License No. 01298897

COLLIERS INTERNATIONAL
 3825 Hopyard Road, Suite 195
 Pleasanton, CA 94588
 www.colliers.com

FOR LEASE > 9,237± SF > PROMINENT SIGNAGE

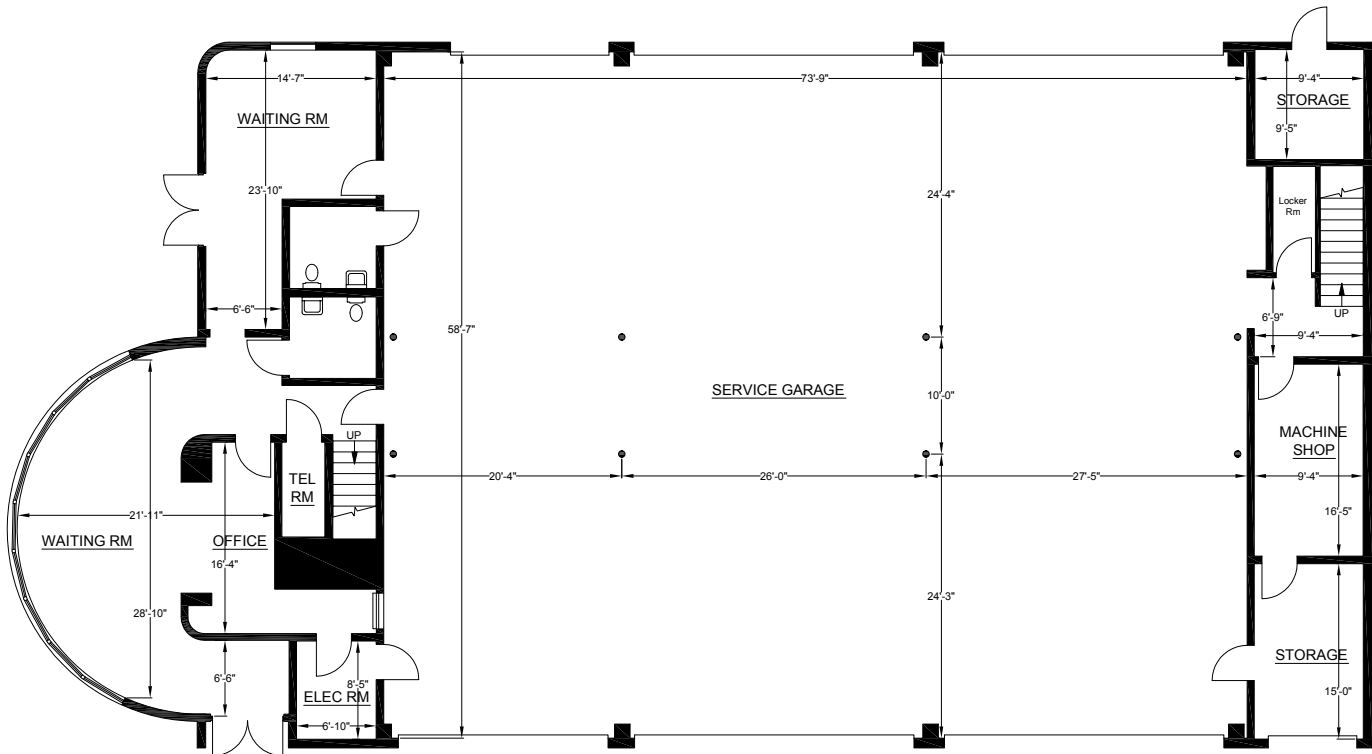
Dublin, CA

Turn-Key Fully Equipped Auto Repair



6351 DUBLIN BLVD. DUBLIN, CA

Floor Plan



Information contained herein has been obtained from the owners or from other sources we deem reliable. We have no reason to doubt its accuracy but regret we cannot guarantee it. All Properties subject to change or withdrawal without notice.

PATRIC DAVIS
+1 925 227 6219
patric.davis@colliers.com
CA License No. 01193278

ROBIN NEWTON
+1 925 279 4645
robin.newton@colliers.com
CA License No. 01298897

COLLIERS INTERNATIONAL
3825 Hopyard Road, Suite 195
Pleasanton, CA 94588
www.colliers.com