

FOR LEASE > MUSEUM TOWER

# 100 WEST LIBERTY

RENO | NEVADA 89501



museum tower  
one hundred west liberty

## SUITES AVAILABLE:

±1,056 SF (Ste. 150)\*

±2,577 SF (Ste. 170)

±7,802 SF (Ste. 690)

±3,488 SF (Ste. 740)

\* Suite 150 is a restaurant space

\*\* 9th floor is divisible to 2,000 SF

±2,939 SF (Ste. 820)

±18,952 SF (Entire 9th floor - Suites 900, 920, 940)\*\*

±5,385 SF (Ste. 1150 - Divisible to 874 SF)

## LEASE RATE:

\$1.85/SF Full Service

## BUILDING FEATURES

Newest Class "A" Office Building in the Central Business District. Conveniently located at the corner on W. Liberty next to the Nevada Museum of Art and is within walking distance to all major court facilities, banks, and numerous restaurants. On-site workout facility and Anatomie Personal Training, both conveniently located on the lobby floor. Covered and secure parking on-site. Parking garage served by main elevator bank. Newly remodeled lobby. Balconies on upper floors. On-site property manager. Spectacular views of the Sierra Nevada Mountain Range.

For more information,  
please contact:

## Reno Office Team

**TIM RUFFIN, SIOR**

Managing Partner

Sr. Vice President

T +1 775.823.9666

[tim.ruffin@colliers.com](mailto:tim.ruffin@colliers.com)

**MELISSA MOLYNEAUX, CCIM**

Sr. Associate

Office Properties

T +1 775.823.9666

[melissa.molyneaux@colliers.com](mailto:melissa.molyneaux@colliers.com)

The information furnished has been obtained from sources we deem reliable and is submitted subject to errors, omissions and changes. Although Colliers Nevada, LLC has no reason to doubt its accuracy, we do not guarantee it. All information should be verified by the recipient prior to lease, purchase, exchange or execution of legal documents.

Colliers International  
10765 Double R Blvd., Suite 100

Reno, Nevada 89521

P: +1 775.823.9666 | F: +1 775.823.4699

[www.colliers.com](http://www.colliers.com)

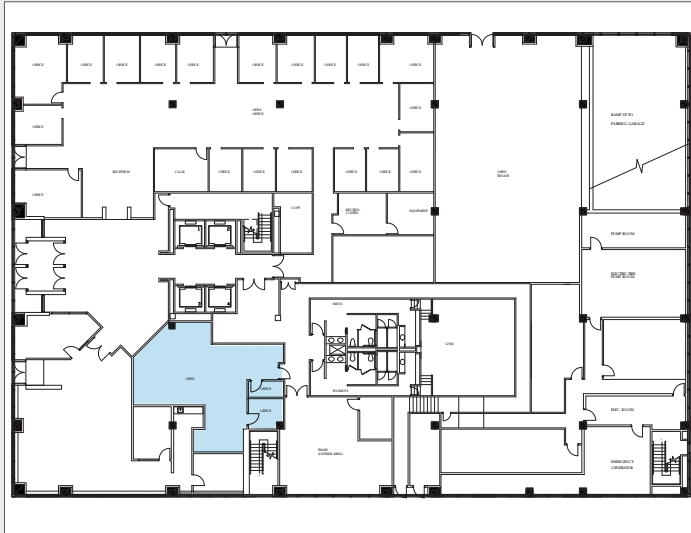
FOR LEASE > MUSEUM TOWER

# 100 WEST LIBERTY

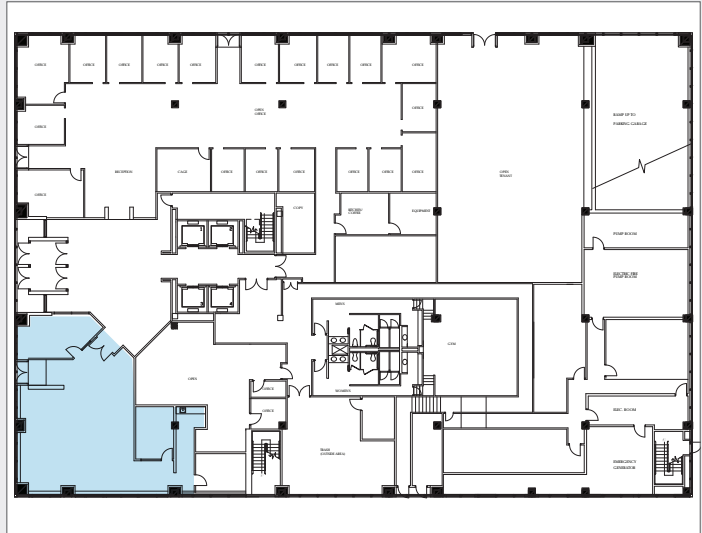


RENO | NEVADA 89501

SUITE 150 - ± 1,056 SF  
*Restaurant Space*



SUITE 170 - ± 2,577 SF



SUITE 690 - ± 7,802 SF



SUITE 740 - ± 3,488 SF



The information furnished has been obtained from sources we deem reliable and is submitted subject to errors, omissions and changes. Although Colliers Nevada, LLC has no reason to doubt its accuracy, we do not guarantee it. All information should be verified by the recipient prior to lease, purchase, exchange or execution of legal documents.

Colliers International  
10765 Double R Blvd., Suite 100  
Reno, Nevada 89521

P: +1 775.823.9666 | F: +1 775.823.4699

[www.colliers.com](http://www.colliers.com)

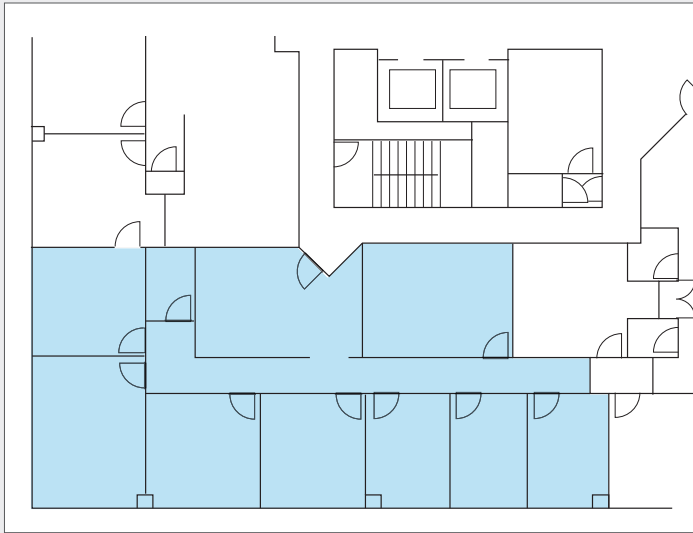
FOR LEASE > MUSEUM TOWER

# 100 WEST LIBERTY

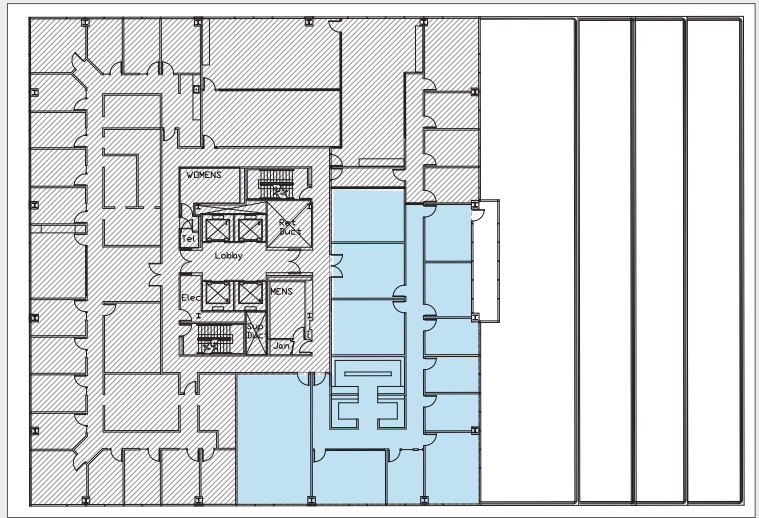
RENO | NEVADA 89501



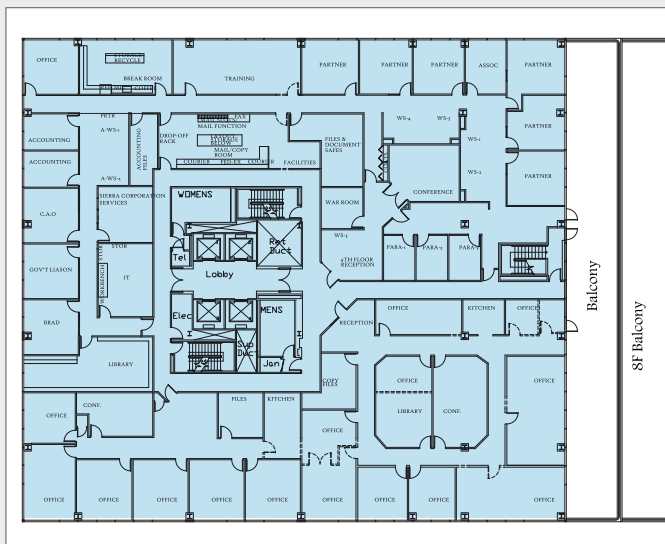
SUITE 820 - ± 2,939 SF



SUITE 1150 - ± 5,385 SF



9TH FLOOR - ± 18,952 SF



The information furnished has been obtained from sources we deem reliable and is submitted subject to errors, omissions and changes. Although Colliers Nevada, LLC has no reason to doubt its accuracy, we do not guarantee it. All information should be verified by the recipient prior to lease, purchase, exchange or execution of legal documents.

Colliers International  
10765 Double R Blvd., Suite 100  
Reno, Nevada 89521  
P: +1 775.823.9666 | F: +1 775.823.4699  
www.colliers.com

FOR LEASE > MUSEUM TOWER

# 100 WEST LIBERTY

RENO | NEVADA 89501



## AMENITIES



**FOOD:** Museum Tower is conveniently located near many restaurants and eateries. Including Wine & Cheese Board, Cafe Muse (at the Nevada Museum of Art), Newman's Deli, Peg's Glorified Eggs & Ham, Amendment 21, Nick's Greek Deli, Michael's, Freeman's, El Salvador, Blue Moon Pizza, Blue Plate, Roses, Viola, Quiznos, Wild River Grille, Dreamers, Rubicon Deli, Tacos del Mar, Silver Peak, Subway, Port of Subs and more. In addition, Paisan's Old World Deli is located on the lobby floor which provides coffee, to go sandwiches and salads and catering.



**ONSITE GYM:** Museum Tower offers free access to an on-site gym. Use the state of the art fitness equipment before work, at lunch or after work. Lockerooms with showers are provided for your convenience.



**ANATOMIE FITNESS:** Anatomie Fitness: Museum Tower is home to Anatomie Fitness which provides personal training. Anatomie is conveniently located on the first floor. Please visit [www.anatomiereno.com](http://www.anatomiereno.com) for more information.



**COVERED PARKING:** Museum Tower offers covered parking with access to the main elevator bank that takes you directly to your floor. In addition, there is a surface level parking lot on the south side of the building and street parking is available.

**WALKING DISTANCE:** Museum Tower is ideal for law firms, financial institutions and other professional service firms due to its convenient location. Museum Tower is within

walking distance to The Mills Lane Court House, Second Judicial District Court House for the State of Nevada, US District Court House, the Public Defender's Office, the District Attorney's Office, the Law Library and numerous law firms. The building is located within the Financial District and provides easy access to bank branches: NV State Bank, Wells Fargo, Bank of America, US Bank, and more. Other prominent buildings within walking distance include: Reno City Hall, NV State Bank, Wells Fargo, Bank of America, US Bank, etc.



**OUTSTANDING VIEWS:** Museum Tower has the best views of Reno from all directions. The majority of the suites have private balconies with exceptional views.

**DOWNTOWN CULTURE:** Museum Tower is located near. Which offers easy access to the Nevada Museum of Art, Wingfield Park (home to many events including Artown), Aces Baseball Stadium, The Reno Philharmonic, Riverside Artist Lofts, Riverwalk, and more!

The information furnished has been obtained from sources we deem reliable and is submitted subject to errors, omissions and changes. Although Colliers Nevada, LLC has no reason to doubt its accuracy, we do not guarantee it. All information should be verified by the recipient prior to lease, purchase, exchange or execution of legal documents.

Colliers International  
10765 Double R Blvd., Suite 100  
Reno, Nevada 89521  
P: +1 775.823.9666 | F: +1 775.823.4699  
[www.colliers.com](http://www.colliers.com)

FOR LEASE > MUSEUM TOWER

# 100 WEST LIBERTY

RENO | NEVADA 89501



For more information,  
please contact:

## Reno Office Team

**TIM RUFFIN, SIOR**  
Managing Partner  
Sr. Vice President  
T +1 775.823.9666  
[tim.ruffin@colliers.com](mailto:tim.ruffin@colliers.com)

**MELISSA MOLYNEAUX, CCIM**  
Sr. Associate  
Office Properties  
T +1 775.823.9666  
[melissa.molyneaux@colliers.com](mailto:melissa.molyneaux@colliers.com)

The information furnished has been obtained from sources we deem reliable and is submitted subject to errors, omissions and changes. Although Colliers Nevada, LLC has no reason to doubt its accuracy, we do not guarantee it. All information should be verified by the recipient prior to lease, purchase, exchange or execution of legal documents.

Colliers International  
10765 Double R Blvd., Suite 100  
Reno, Nevada 89521  
P: +1 775.823.9666 | F: +1 775.823.4699  
[www.colliers.com](http://www.colliers.com)  
Updated 7/7/2011