

FOR LEASE

Office / Flex, Light Industrial Space Available in Concord, CA



CONCORD BUSINESS PARK

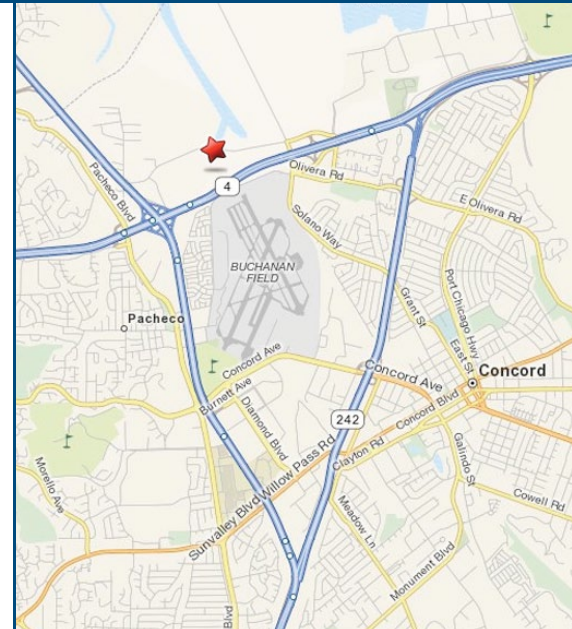
PROPERTY INFORMATION

Zoning L-I • Light Industrial

HIGHLIGHTS

- Great North Concord Location
- Close proximity to Hwy 4 & I-680
- Drive-around truck access
- Clean, well landscaped grounds
- Buildings offer a variety of sizes and configurations
- Potential freeway visibility

Owned by
IndCor Properties



Brian Slocum CCIM
925 279 5568
brian.slocum@colliers.com
CA License No. 01471483

Tony Binswanger
925 279 5579
tony.binswanger@colliers.com
Lic.01861701

Information contained herein has been obtained from the owners or from other sources deemed reliable. We have no reason to doubt its accuracy but regret we cannot guarantee it. All properties subject to change or withdrawal without notice.

1850 Mt Diablo Blvd., Suite 200, Walnut Creek CA 94596
(925) 279-0120 • (925) 279-0450 Fax
www.colliersparrish.com

COLLIERS INTERNATIONAL
WWW.COLLIERS.COM

07.29.13



CONCORD BUSINESS PARK

Address	5600-5750 Imhoff Dr. Concord, CA
Constructed	1988 / 89
Number of Buildings	5
Number of Suites	26
Avg Suite Size	5,453± Sq Ft
FAR	40.3 %
Parking Ratio	1.97 per 1,000 Sq Ft
Loading	51 grade-level roll up doors
Clear Heights	15' to 17'
Truck Staging Area	N/A
Zoning	L-1 Light Industrial
Rail Service	No

Location

The Project is located north of Highway 4 & Solano Way at the intersection of Solano Way and Imhoff Dr in Concord, CA.

Accessibility

Accessible through 2 curb cuts off Imhoff Dr & 2 curb cuts off Solano

Construction

Concrete tilt-up. Reinforced concrete spread footings beneath interior and exterior columns and continuous spread footings at exterior concrete walls.

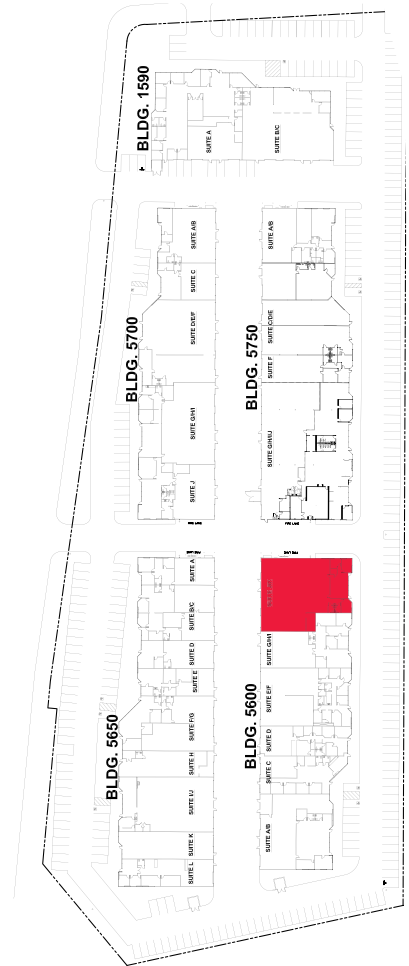
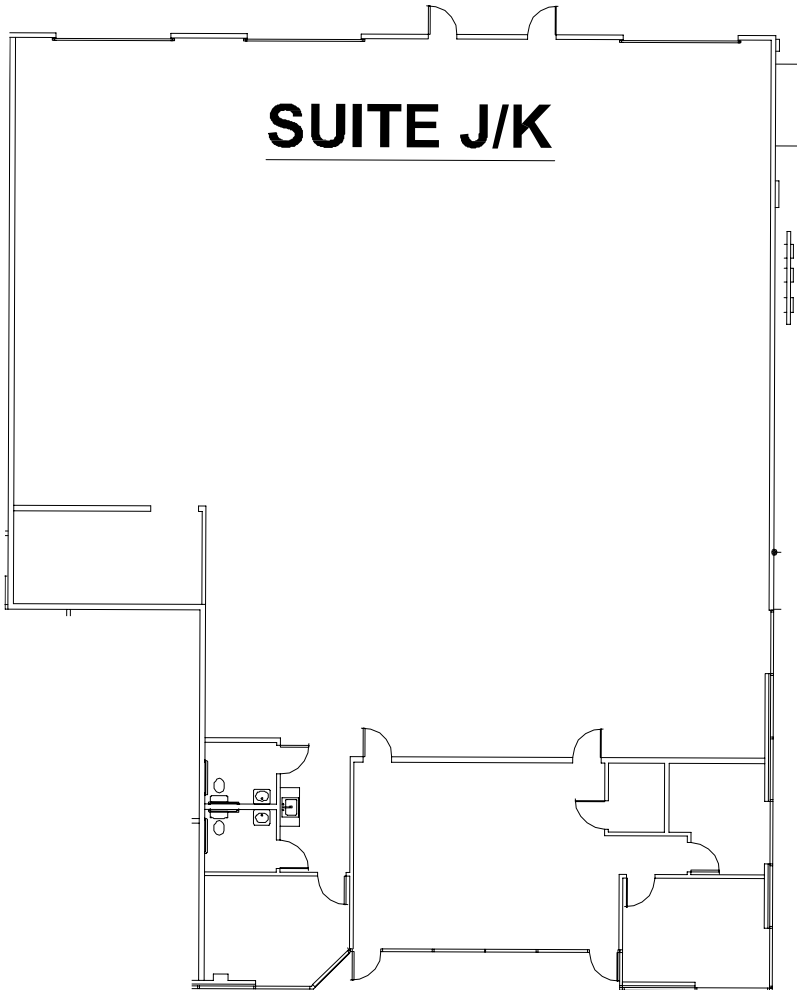


Colliers International
1850 Mt Diablo Boulevard, Suite 200
Walnut Creek, California USA 94596
Tel 925.279.0120 Fax 925.279.0450
www.colliersparrish.com

Brian Slocum CCIM
925 279 5568
brian.slocum@colliers.com
CA License No. 01471483

Tony Binswanger
925 279 5579
tony.binswanger@colliers.com
Lic.01861701

5600 IMHOFF DR. - SUITE J/K - ±7,200 Sq Ft

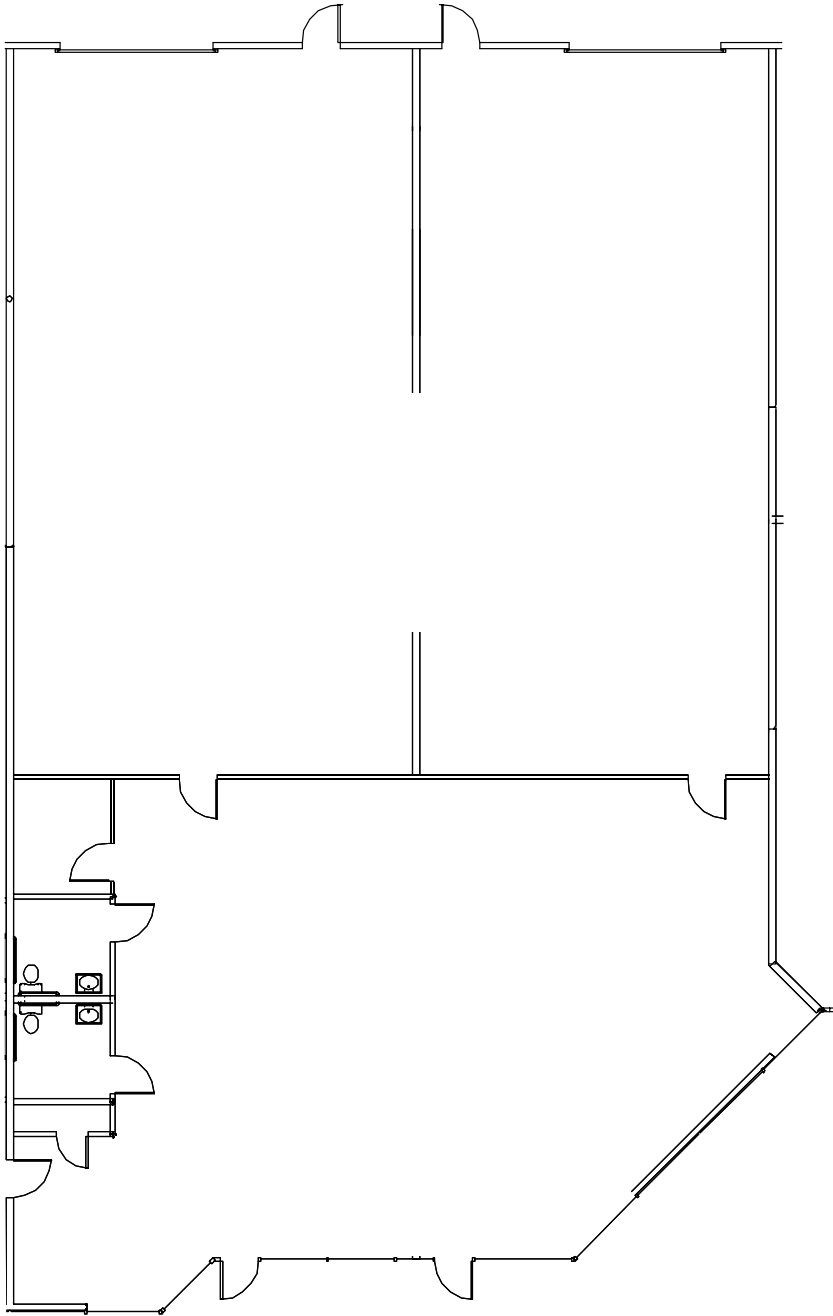


Colliers International
1850 Mt Diablo Boulevard, Suite 200
Walnut Creek, California USA 94596
Tel 925.279.0120 Fax 925.279.0450
www.colliersparrish.com

Brian Slocum CCIM
925 279 5568
brian.slocum@colliers.com
CA License No. 01471483

Tony Binswanger
925 279 5579
tony.binswanger@colliers.com
Lic.01861701

5750 IMHOFF DR. - SUITE D/E - ±5,883 Sq Ft

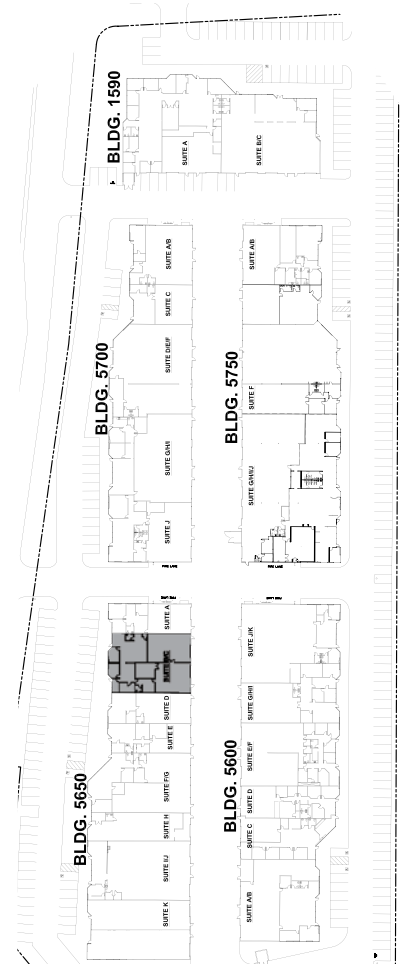
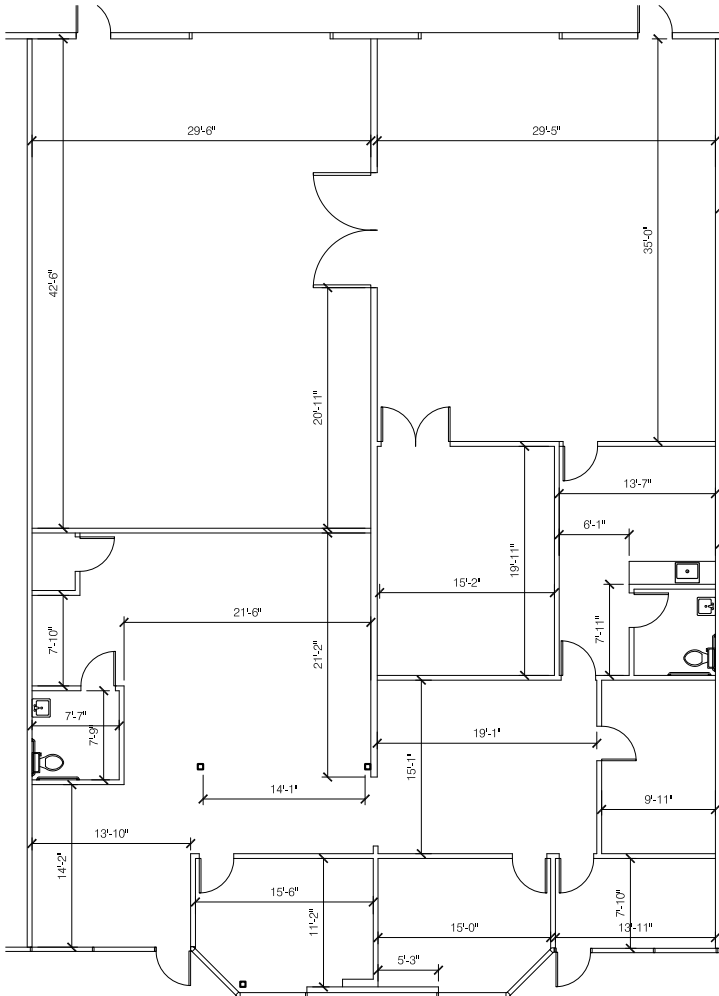


Colliers International
1850 Mt Diablo Boulevard, Suite 200
Walnut Creek, California USA 94596
Tel 925.279.0120 Fax 925.279.0450
www.colliersparrish.com

Brian Slocum CCIM
925 279 5568
brian.slocum@colliers.com
CA License No. 01471483

Tony Binswanger
925 279 5579
tony.binswanger@colliers.com
Lic.01861701

5650 IMHOFF DR. - SUITE B/C - ±5,040 Sq Ft



* occupied month to month

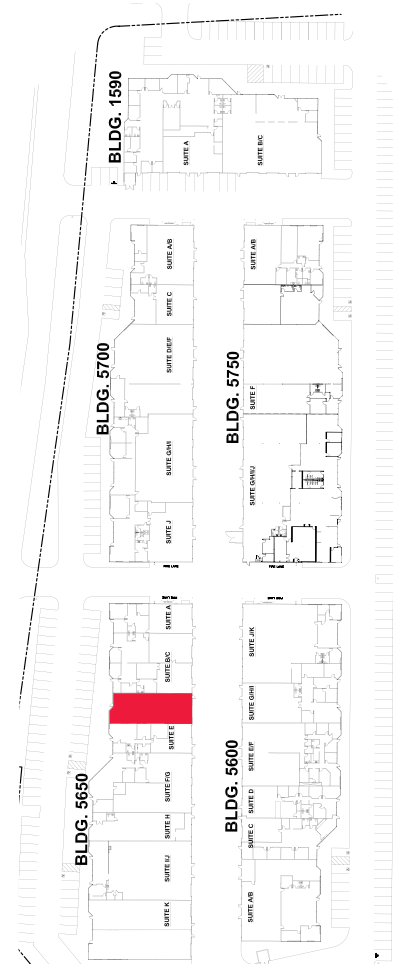
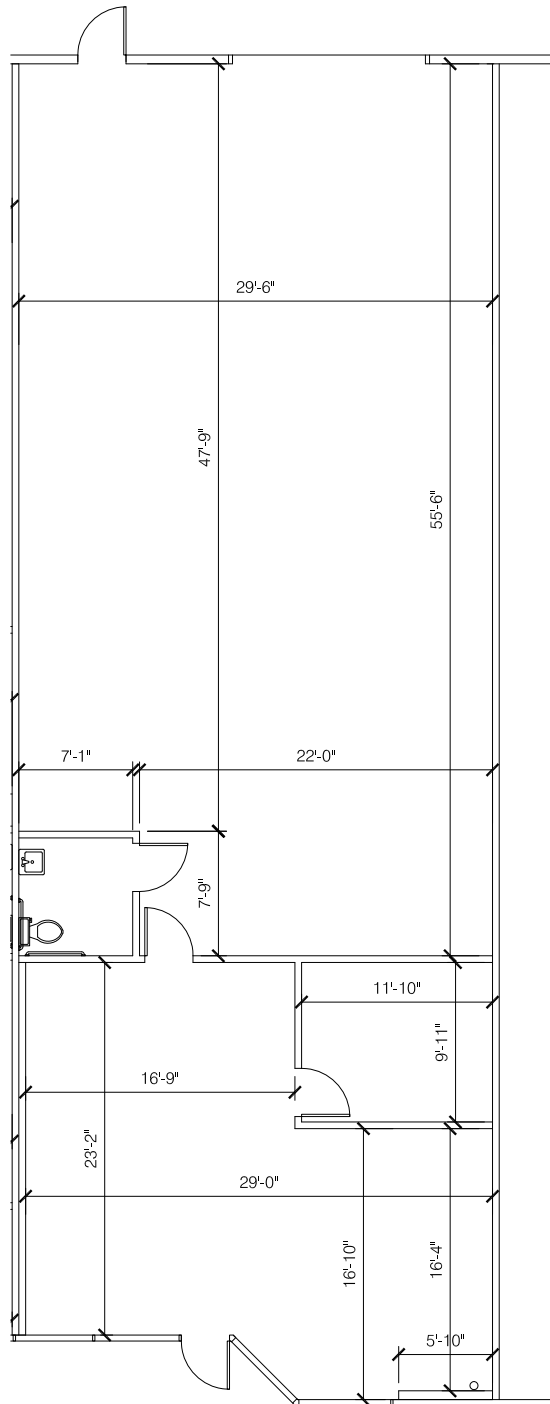


Colliers International
 1850 Mt Diablo Boulevard, Suite 200
 Walnut Creek, California USA 94596
 Tel 925.279.0120 Fax 925.279.0450
www.colliersparrish.com

Brian Slocum CCIM
 925 279 5568
brian.slocum@colliers.com
 CA License No. 01471483

Tony Binswanger
 925 279 5579
tony.binswanger@colliers.com
 Lic.01861701

5650 IMHOFF DR. - SUITE D - ±2,520 Sq Ft

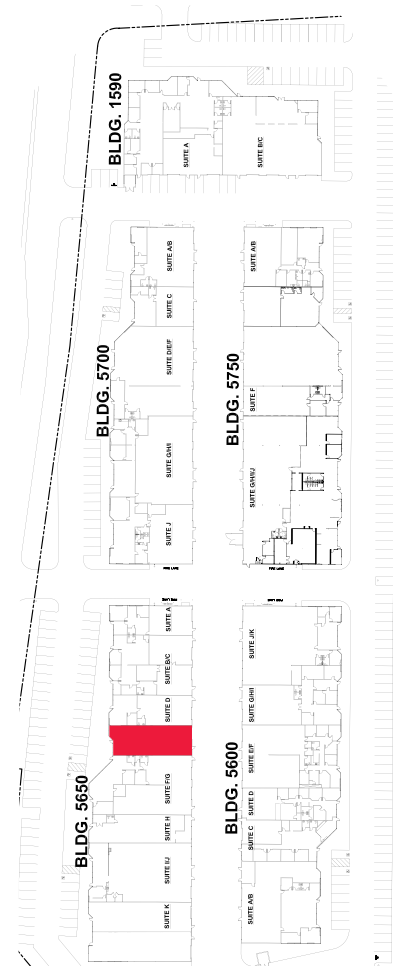
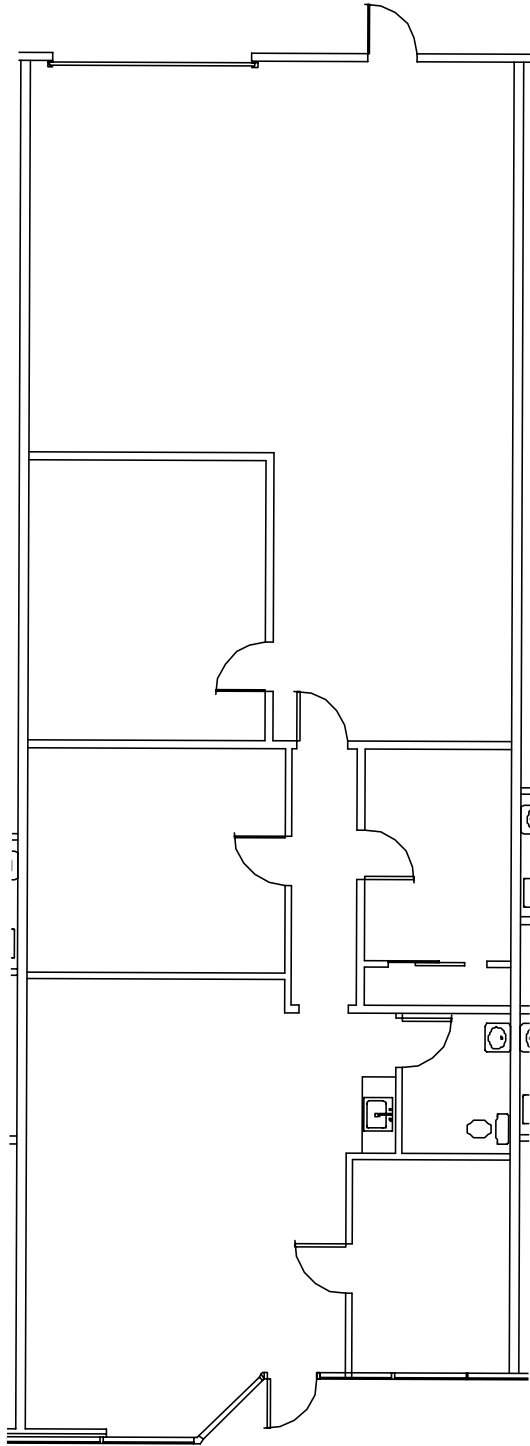


Colliers International
 1850 Mt Diablo Boulevard, Suite 200
 Walnut Creek, California USA 94596
 Tel 925.279.0120 Fax 925.279.0450
 www.colliersparrish.com

Brian Slocum CCIM
 925 279 5568
 brian.slocum@colliers.com
 CA License No. 01471483

Tony Binswanger
 925 279 5579
 tony.binswanger@colliers.com
 Lic.01861701

5650 IMHOFF DR. - SUITE E - ±2,520 Sq Ft



Colliers International
1850 Mt Diablo Boulevard, Suite 200
Walnut Creek, California USA 94596
Tel 925.279.0120 Fax 925.279.0450
www.colliersparrish.com

Brian Slocum CCIM
925 279 5568
brian.slocum@colliers.com
CA License No. 01471483

Tony Binswanger
925 279 5579
tony.binswanger@colliers.com
Lic.01861701