

# CHURCH FOR SALE

1406 RADIO ROAD :: REDWOOD CITY, CA

:: RELIGIOUS FACILITIES GROUP



:: For more information, please contact

:: **ERIC KNOWLES**

Religious Facilities Group  
Lic. 00944210  
858.546.4634  
eric.knowles@cbre.com

:: **ROBERT FLETCHER**

Religious Facilities Group  
Lic. 01706060  
858.546.4645  
robert.fletcher@cbre.com

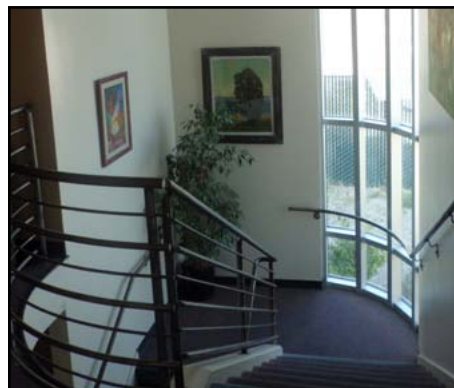
:: **JOE KELLY**

First Vice President  
Lic. 01420963  
650.494.5174  
joe.kelly@cbre.com

**CB Richard Ellis, Inc.**  
Broker Lic 00409987

:: **PROPERTY HIGHLIGHTS**

- Approx. 7,408 SF church property
- Approx. 2.28 acres
- Property includes sanctuary, 2 stories, elevator served
- Sanctuary seating for 60-70
- Church is a historic site, built in 1930
- Zoning: TP0000 RSB (Redwood Shores Bayfront)
- APN: 095-012-070
- Price: \$1,900,000



[www.cbre.com/religiousfacilities](http://www.cbre.com/religiousfacilities)

© 2011 CBRE, Inc. The information contained in this document has been obtained from sources believed reliable. While CBRE, Inc. does not doubt its accuracy, CBRE, Inc. has not verified it and makes no guarantee, warranty or representation about it. It is your responsibility to independently confirm its accuracy and completeness. Any projections, opinions, assumptions or estimates used are for example only and do not represent the current or future performance of the property. The value of this transaction to you depends on tax and other factors which should be evaluated by your tax, financial and legal advisors. You and your advisors should conduct a careful, independent investigation of the property to determine to your satisfaction the suitability of the property for your needs.

**CBRE**

# CHURCH FOR SALE

1406 RADIO ROAD :: REDWOOD CITY, CA

:: RELIGIOUS FACILITIES GROUP

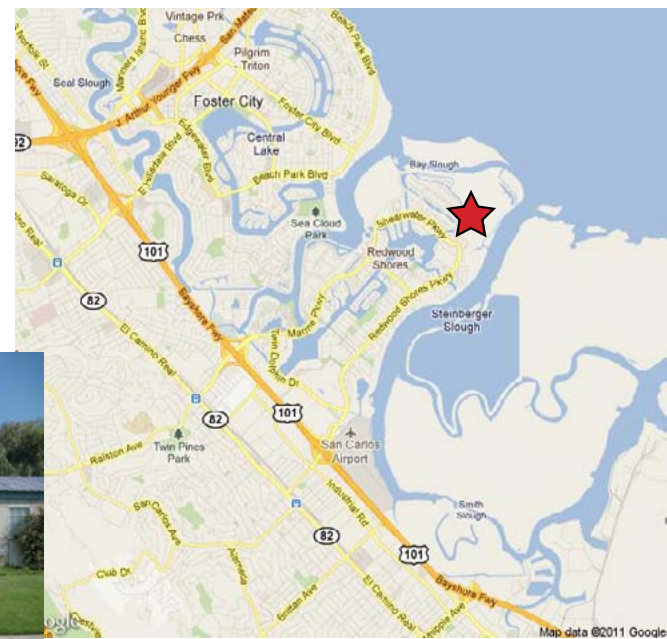
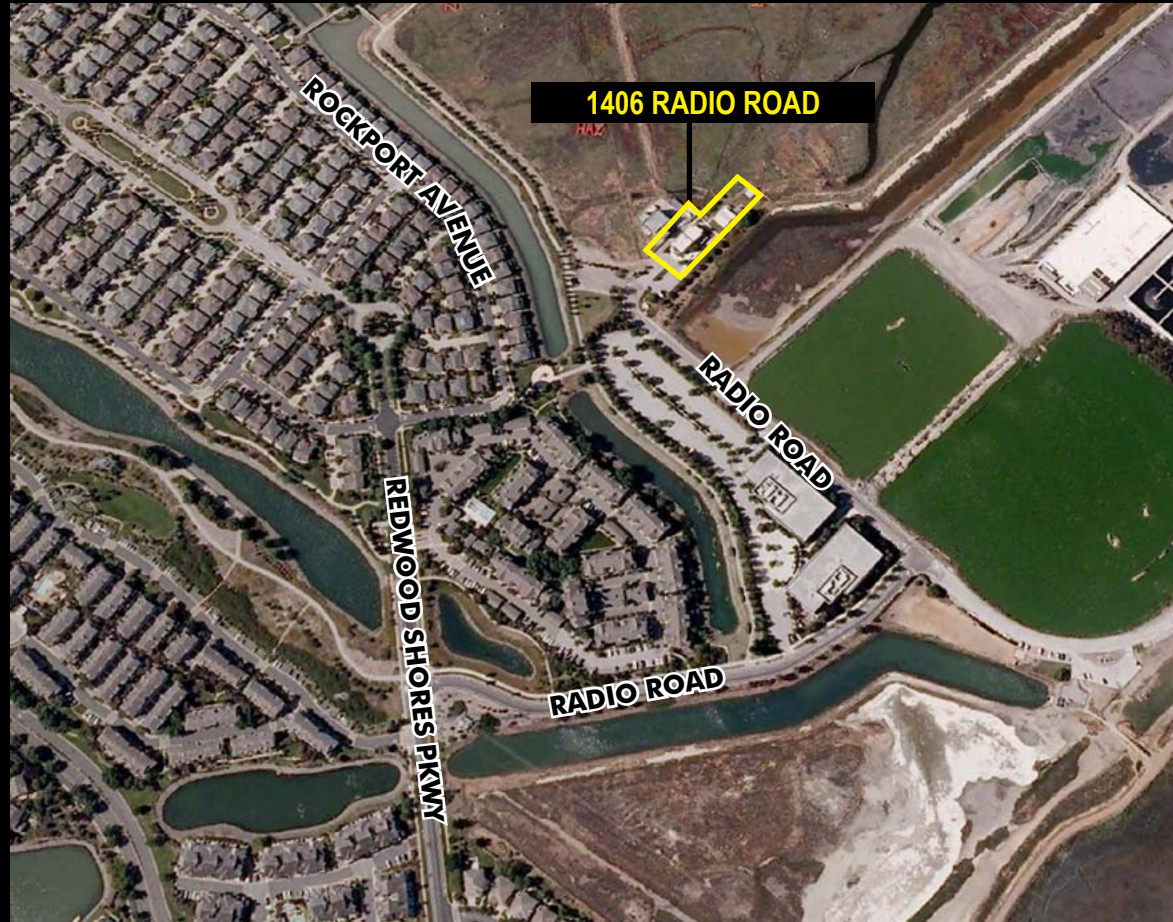


:: For more information, please contact

**ERIC KNOWLES**  
Religious Facilities Group  
Lic. 00944210  
858.546.4634  
eric.knowles@cbre.com

**ROBERT FLETCHER**  
Religious Facilities Group  
Lic. 01706060  
858.546.4645  
robert.fletcher@cbre.com

**JOE KELLY**  
First Vice President  
Lic. 01420963  
650.494.5714  
joe.kelly@cbre.com



© 2011 CBRE, Inc. The information contained in this document has been obtained from sources believed reliable. While CBRE, Inc. does not doubt its accuracy, CBRE, Inc. has not verified it and makes no guarantee, warranty or representation about it. It is your responsibility to independently confirm its accuracy and completeness. Any projections, opinions, assumptions or estimates used are for example only and do not represent the current or future performance of the property. The value of this transaction to you depends on tax and other factors which should be evaluated by your tax, financial and legal advisors. You and your advisors should conduct a careful, independent investigation of the property to determine to your satisfaction the suitability of the property for your needs.

**CBRE**