



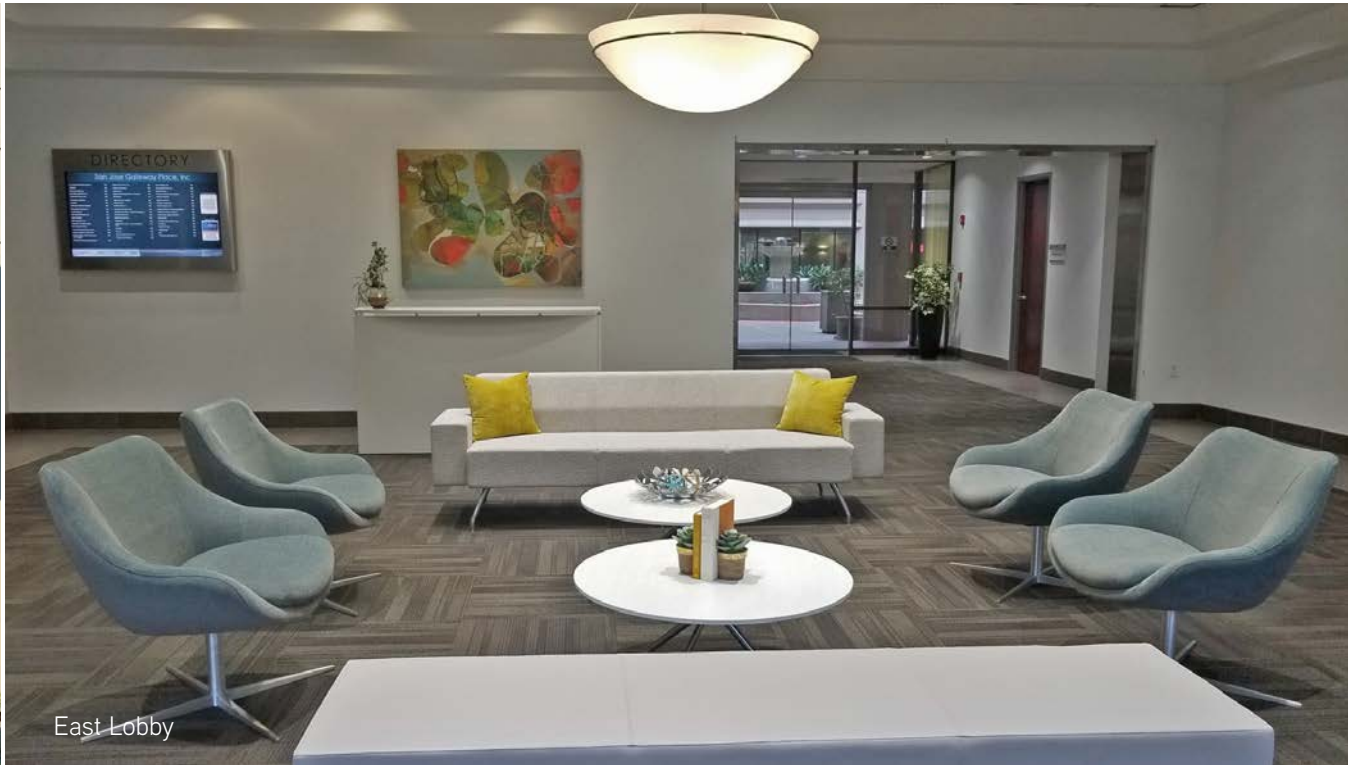
2025 GATEWAY PLACE

San Jose
California





Main Entrance



East Lobby



West Lobby

AVAILABLE SUMMARY

SUITE	RSF	COMMENTS
220	2,748	Available 7/1/19
230	2,313	Available 8/1/19
290	4,884	Available Now
320	2,390	Available 10/15/19 (*Possibly sooner)
435	2,945	Available Now
460	7,116	Available 7/1/19



Susan Gregory, SIOR
 Tel: +1 408 282 3940
 susan.gregory@colliers.com
 CA License No. 01217517

Marne Michaels
 Tel: +1 408 282 3838
 marne.michaels@colliers.com
 CA License No. 00789385

2025 GATEWAY PLACE San Jose California



2025 GATEWAY PLACE

Mineta/San Jose
International
Airport

DOUBLETREE
BY HILTON HOTEL

Airport Parkway



Brokaw Road



Light Rail Stop



Technology Drive

Metro Drive

Matrix Boulevard

Skyport Drive

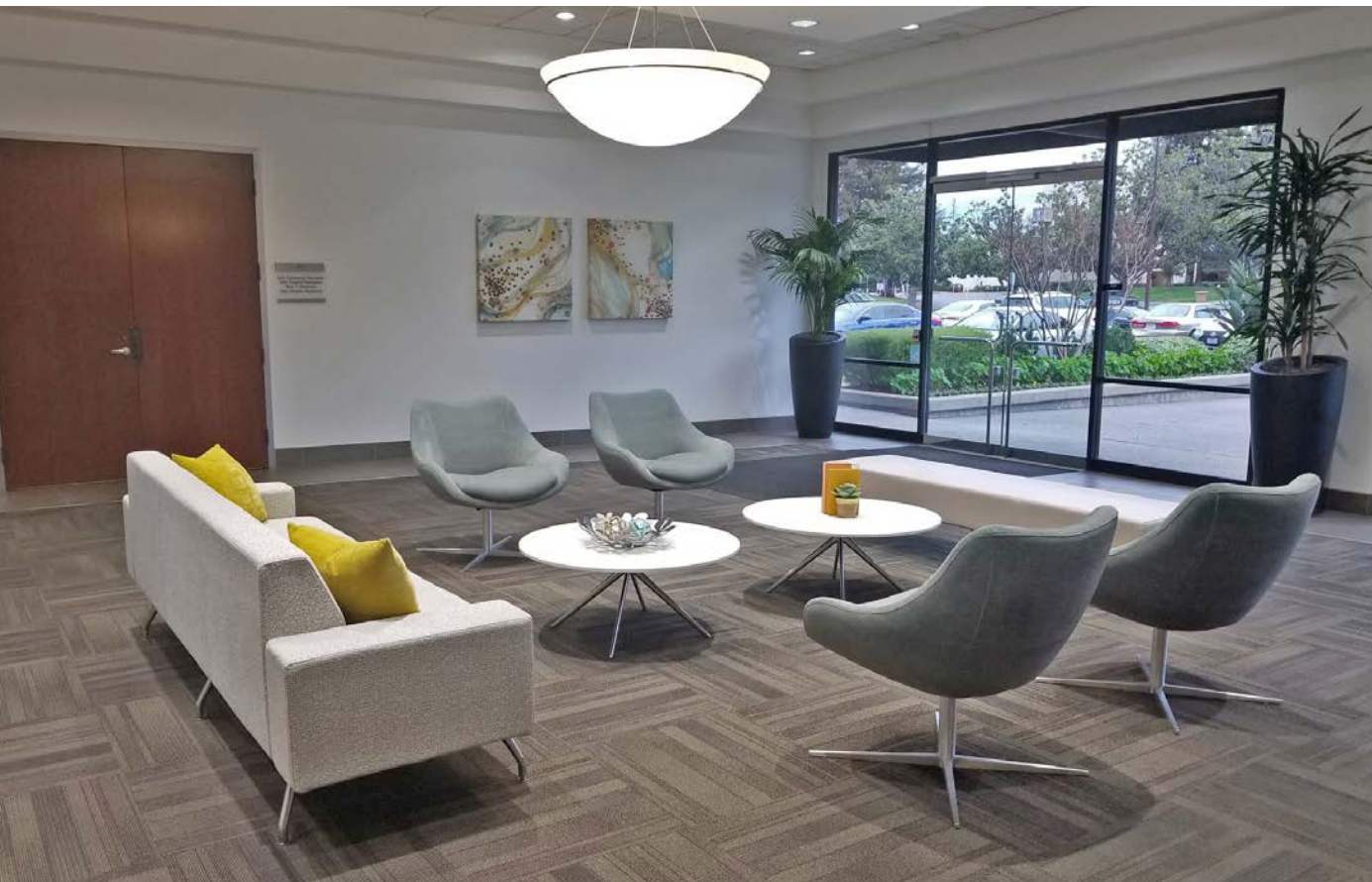
North First Street
Light Rail



Susan Gregory, sIOR
Tel: +1 408 282 3940
susan.gregory@colliers.com
CA License No. 01217517

Marne Michaels
Tel: +1 408 282 3838
marne.michaels@colliers.com
CA License No. 00789385

2025 GATEWAY PLACE
San Jose
California



- Central Silicon Valley location adjacent to Mineta San Jose International Airport
- Excellent access to Highways 101, 87, 280 and Interstate 880
- 3.3/1000 surface parking
- On-Site property management, conference room, deli and UPS drop
- Half block from airport and Santa Clara Caltrain Station shuttle – runs approximately every 15 minutes
- Walking distance to a variety of amenities
- 3 blocks from Metro/Airport light rail stop
- Showers available on 3rd floor
- Energy Star distinguished building since 2007
- ASVB Sentrilock lockbox located to the right of the exterior main lobby doors
- Serviced by Comcast
- Free WiFi in the Courtyard

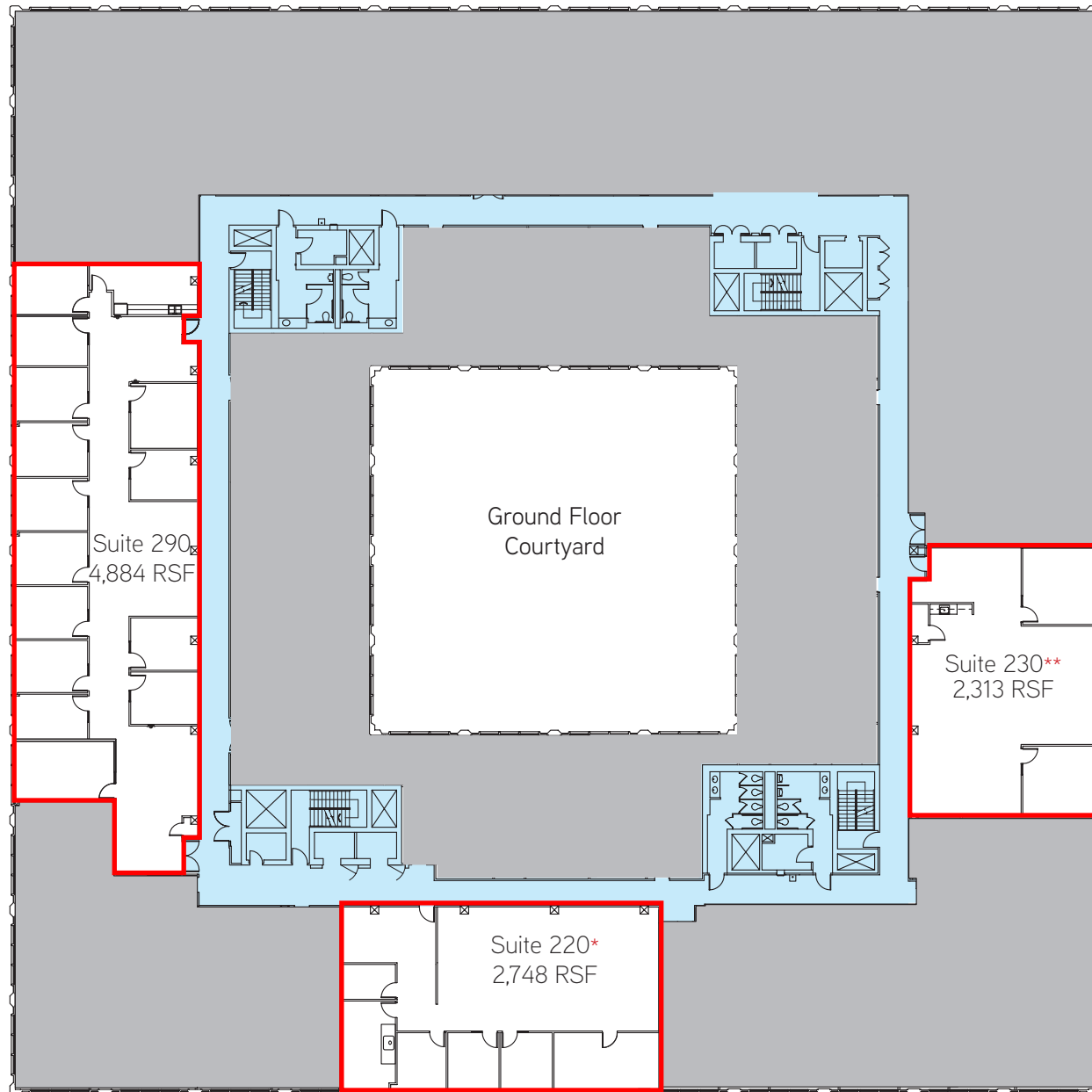


Susan Gregory, SIOR
Tel: +1 408 282 3940
susan.gregory@colliers.com
CA License No. 01217517

Marne Michaels
Tel: +1 408 282 3838
marne.michaels@colliers.com
CA License No. 00789385

2025 GATEWAY PLACE San Jose California

2ND FLOOR



Suite 290
4,884 RSF

Suite 230**
2,313 RSF

Suite 220*
2,748 RSF

*Available 7/1/19

**Available 8/1/19



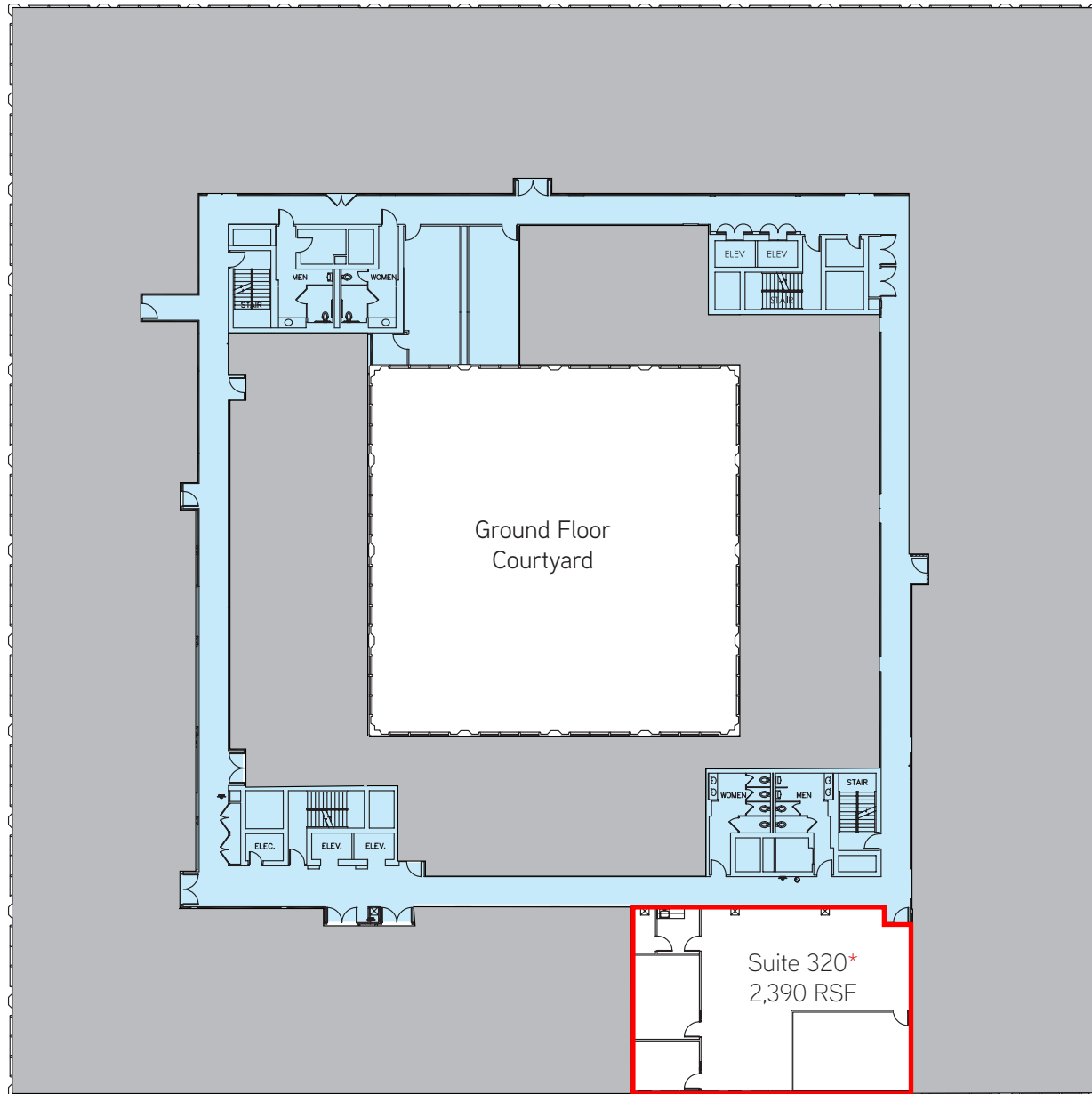
Susan Gregory, SIOR
Tel: +1 408 282 3940
susan.gregory@colliers.com
CA License No. 01217517

Marne Michaels
Tel: +1 408 282 3838
marne.michaels@colliers.com
CA License No. 00789385

2025 GATEWAY PLACE San Jose California

3

3RD FLOOR



*Available 10/15/19
(*Possibly sooner)



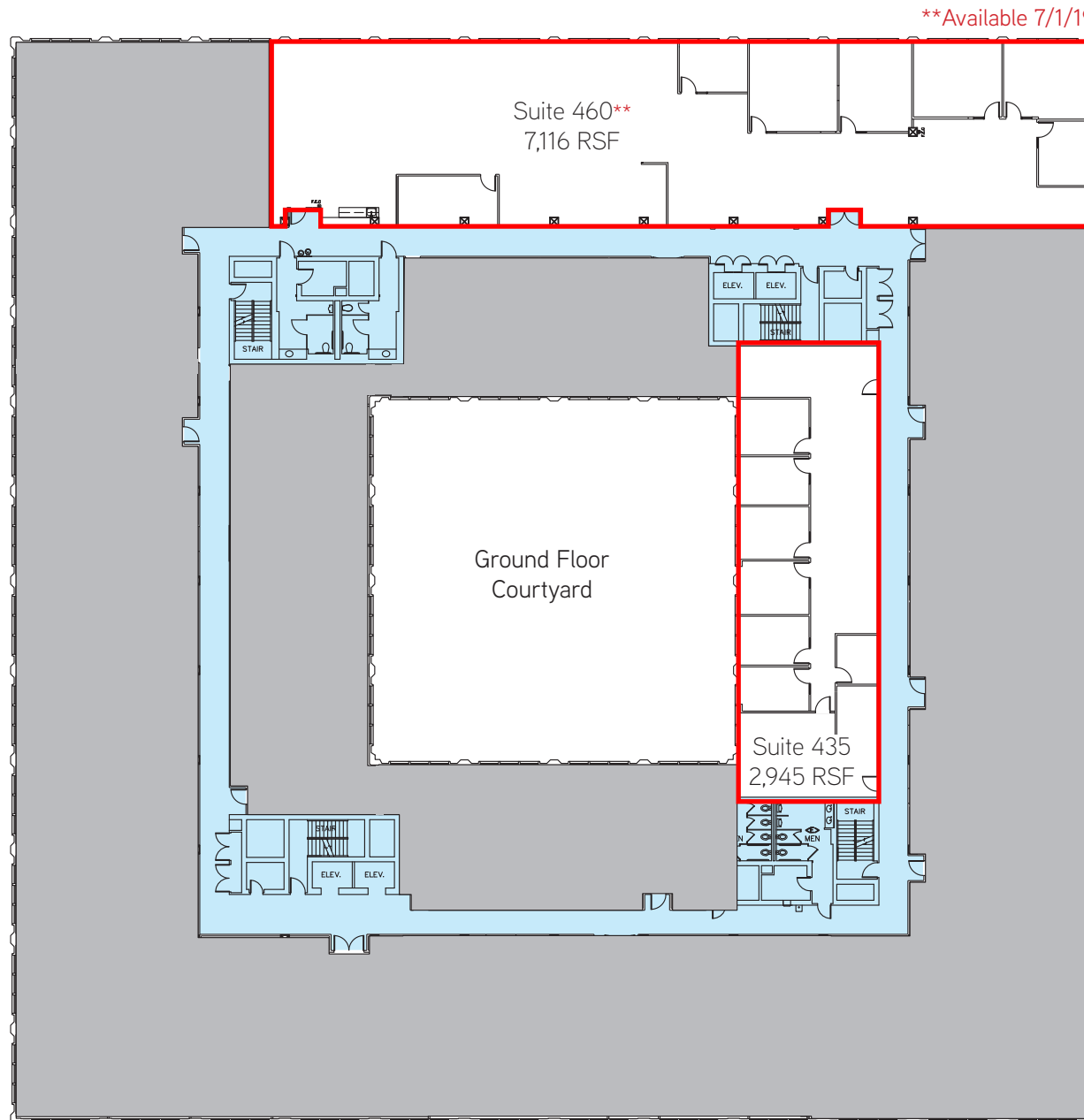
Susan Gregory, SIOR
Tel: +1 408 282 3940
susan.gregory@colliers.com
CA License No. 01217517

Marne Michaels
Tel: +1 408 282 3838
marne.michaels@colliers.com
CA License No. 00789385

2025 GATEWAY PLACE San Jose California

4

4TH FLOOR



Susan Gregory, SIOR
Tel: +1 408 282 3940
susan.gregory@colliers.com
CA License No. 01217517

Marne Michaels
Tel: +1 408 282 3838
marne.michaels@colliers.com
CA License No. 00789385

2025 GATEWAY PLACE San Jose California



LEGEND

- **Financial Institutions**
 1. Comerica Bank
 2. Wells Fargo Bank
 3. Provident Credit Union
 4. City National Bank
 5. Chase
- **Mail Services**
 1. Fed Ex Office
 2. Fed Ex & UPS Drop Boxes
- **Additional Services & Convenient Shopping**
 1. Club One Fitness
 2. PetSmart, Office Depot, Payless Shoe Source, GameStop, Sally Beauty Supply, Michael's, Cost Plus World Market
 3. Marshall's
 4. Target
 5. Sleeptrain Mattress Center, Trader Joe's
 6. T-Mobile, Diamond Dental, Supercuts, American Nail & Tan, European Wax Center
 7. Blu Cocoon Med Spa
 8. 24 Hour Fitness
 9. Lowe's
 10. Costco
 11. Kaiser Permanente Medical Offices
Coming Soon
- **Restaurants**
 1. Starbucks, Honba Sushi, Bagel Street Café, Señor Jalapeño
 2. Menara
 3. Laddle Thai Cuisine, Quizno's
 4. Vito's Trattoria
 5. Spencer's
 6. Starbucks, Chipotle, Pho Viet, Subway
 7. In-N-Out Burger, Smoking Pig, MOD Pizza, Chipotle, Wich Wich Superior Sandwich, Lotus Cafe, Tandoor House, Pho Bel-Air, The Bistro, Eat.Drink.Connect, Ike's Love and Sandwiches
 8. Denny's
 9. Freddie's Sandwiches #2
 10. Zone 8 Sports Bar & Grill
 11. Oasis Deli
 12. Star Cafe
 13. Taco Mani
 14. **San Jose Market Center:** Jamba Juice, Starbucks, Subway, El Pollo Loco, Carl's Jr., Sweet Tomatoes, Blue Mango, Blaze Pizza, Pasta Market, Panda Express, L&L Hawaiian BBQ, Chili's, Tutti Frutti, BJs, Wing Stop, Panera Bread
- **Lodging & Conference Facilities**
 1. Doubletree Hotel
 2. Courtyard by Marriott
 3. Staybridge Suites
 4. Fairfield Inn & Suites by Marriott
 5. Comfort Inn
 6. Residence Inn by Marriott
 7. Hyatt Place
 8. Holliday Inn
 9. Four Points by Sheraton
- **Car Rentals & Services**
 1. Hertz Rent-A-Car
 2. 76 Gas Station
 3. Chevron Gas Station

AMENITIES



Susan Gregory, sIOR
 Tel: +1 408 282 3940
 susan.gregory@colliers.com
 CA License No. 01217517

Marne Michaels
 Tel: +1 408 282 3838
 marne.michaels@colliers.com
 CA License No. 00789385

2025 GATEWAY PLACE San Jose California



Bus & Rail Map

VTA Service		Other Transportation Services	
	Local Bus Routes		Altamont Commuter Express (ACE)/ Capitol Corridor
	Local Bus Routes - Scheduled Trips Only		Caltrain Line & Stations
	Community Bus Routes		0 1 km 1 mile
	Limited Stop Bus Routes		
	Express Bus Routes		
	Rapid 522		
	Light Rail: Mountain View - Winchester		
	Light Rail: Alum Rock - Santa Teresa		
	Light Rail Station		
	Free Shuttles to Airport Terminals A & B and to Santa Clara Caltrain Station		
	Active Carpool Lane		
	Start/End of Carpool Lane		

FREE SHUTTLE BUS [\(SCHEDULE LINK\)](#)

- Service runs from 5:01am to 11:31pm every weekday
- Shuttles run approx. every 15 minutes
- Stops at:
 - Mineta San Jose International Airport: Terminal A & Terminal B
 - Metro Light Rail Station
 - Santa Clara Transit Center Station

CALTRAIN SANTA CLARA TRANSIT CENTER STATION [\(SCHEDULE LINK\)](#)

- Serving from San Francisco to Gilroy
- 42+ local and limited weekday stops (to/from)

VTA LIGHT RAIL / BUS [\(SCHEDULE LINK\)](#)

- Light Rail service to/from Mountain View to South San Jose
- Bus Service to/from Santa Clara Transit Center Station, Metro Light Rail and Gateway Place

ACE TRAIN SANTA CLARA TRANSIT CENTER STATION [\(SCHEDULE LINK\)](#)

- Free shuttle Bus Service to/from Santa Clara Transit Center Station to Light Rail Station

TRANSPORTATION



Susan Gregory, sIOR
 Tel: +1 408 282 3940
 susan.gregory@colliers.com
 CA License No. 01217517

Marne Michaels
 Tel: +1 408 282 3838
 marne.michaels@colliers.com
 CA License No. 00789385

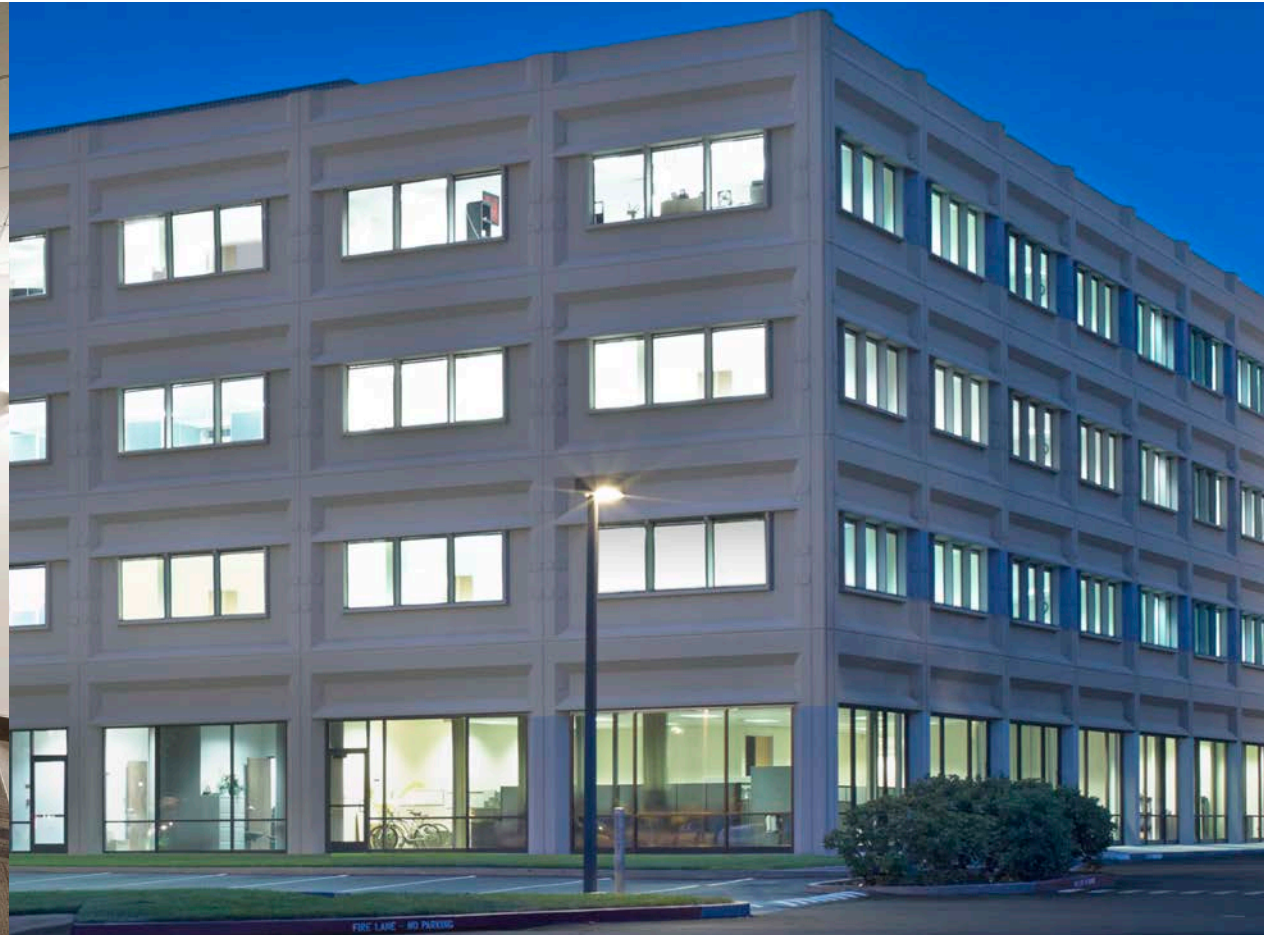
2025 GATEWAY PLACE San Jose California

2025 GATEWAY PLACE

San Jose
California



Lobby



The information contained herein has been obtained from sources we deem reliable. While we have no reason to doubt its accuracy, we do not guarantee it.



FOR MORE INFORMATION:

Susan Gregory, SIOR
Tel: +1 408 282 3940
susan.gregory@colliers.com
CA License No. 01217517

Marne Michaels
Tel: +1 408 282 3838
marne.michaels@colliers.com
CA License No. 00789385