

FOR LEASE

44,000± on the Deep Water Channel

Professional office or educational environment in an excellent location

1550 W. Fremont Street, Stockton

Two-Story Office Building
22,000± SF per floor

- Divisible to 4,000± SF
- 35,000 SF Available
- Private Offices
- Open Areas
- Ample Parking
- Great I-5 Signage Visibility
- Near On/Off Ramp
- Enterprise Zone

Exclusive Broker

Nancy Ann Queirola
nqueirola@fcrei.com
CA DRE #01134315

Kevin Dougherty, CCIM
kdougherty@fcrei.com
CA DRE #01258350

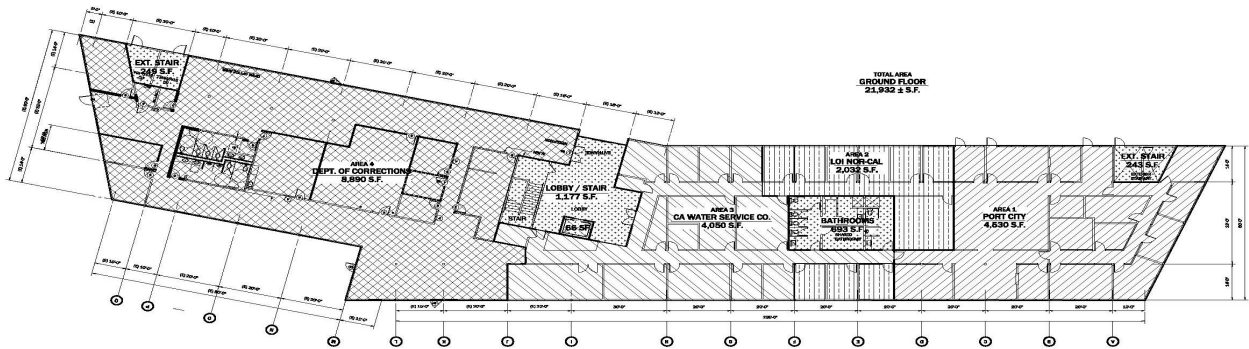
**FIRST COMMERCIAL REAL ESTATE
& ADVISORY SERVICES**

2920 Pacific Avenue
Stockton CA 95204

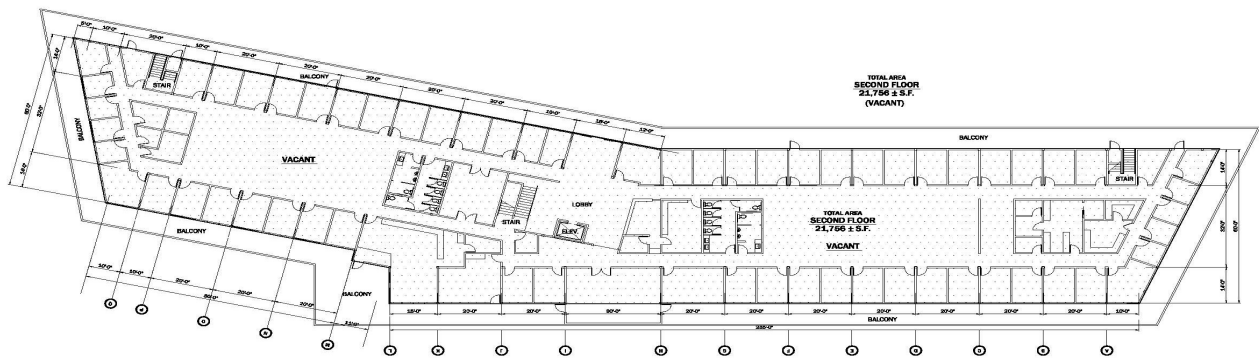
(209) 461-6400
www.fcrei.com



Floor Plans & Site Plan



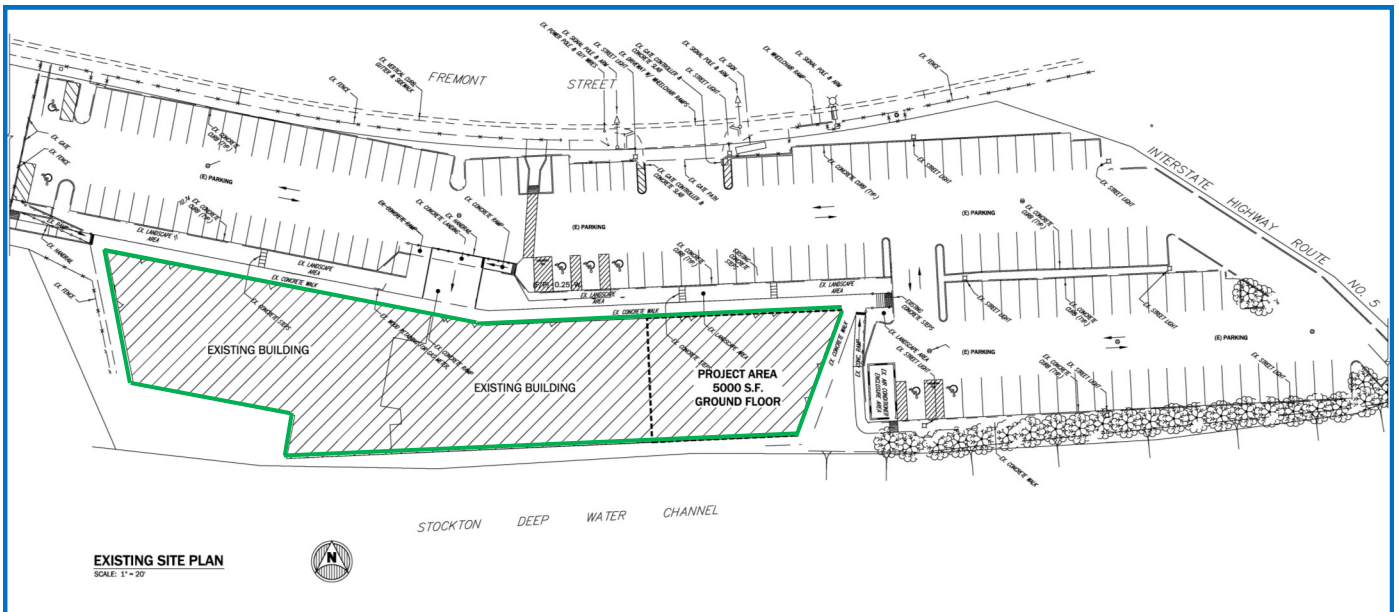
A | GROUND FLOOR
SCALE: 1/16" = 1'-0"



B | SECOND FLOOR
SCALE: 1/16" = 1'-0"

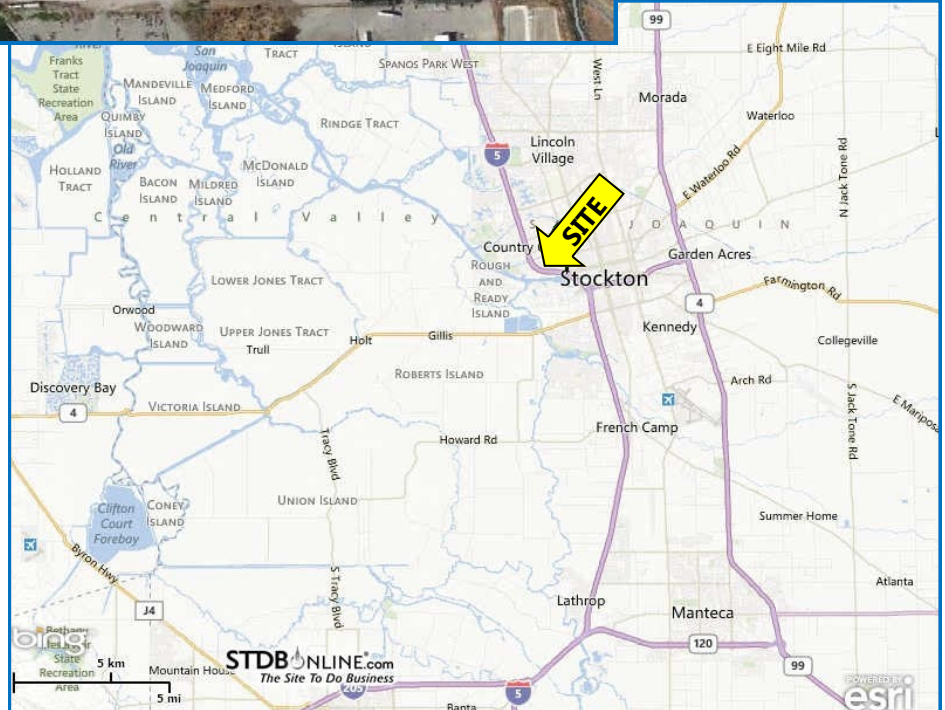
Tenant Information

California Department of Corrections	8,798 SF	\$1.66 psf
Vacant Space	35,202 SF	
Primero Billboard Lease		\$1,500 per month



EXISTING SITE PLAN
SCALE: 1" = 20'

Aerial & Map



Kevin Dougherty, CCIM

Broker / President

Phone: 209.461.6400 x 103

kdougherty@fcrei.com



2920 Pacific Avenue ■ Stockton, CA 95204

(209) 461-6400 ■ (209) 461-6310 Fax

Nancy Ann Queirolo

Associate

Phone: 209.461.6400 x 104

nqueirolo@fcrei.com

This information has been provided from sources which we deem as reliable although we do not guarantee its accuracy. Any prospective buyer or lessee should carefully verify all pertinent property and economic information. Subject to prior sales, price changes, correction or withdrawal.