

For Sale

Price Reduction to \$1,995,000

Former Unilever, USDA Food Grade, Lab
Warehouse and R&D Space

45,505 SF

PRICE REDUCTION!



Property Features

- Clean, Secure, Food-Grade R&D and Production Facility
- Central Stockton Location Adjacent to Manufacturers
- Easy Highway 99 and Interstate 5 Freeway Access
- Campus Quality Feel and Appearance

2029 E. Harding Way

Stockton, CA 95205

Joe Muratore, CCIM

Principal

+1 209 534 9455

joe@naibenchmark.com

BRE#01763752

Kris Helton

Associate

+1 209 988 3176

kris@naibenchmark.com

BRE#01931244

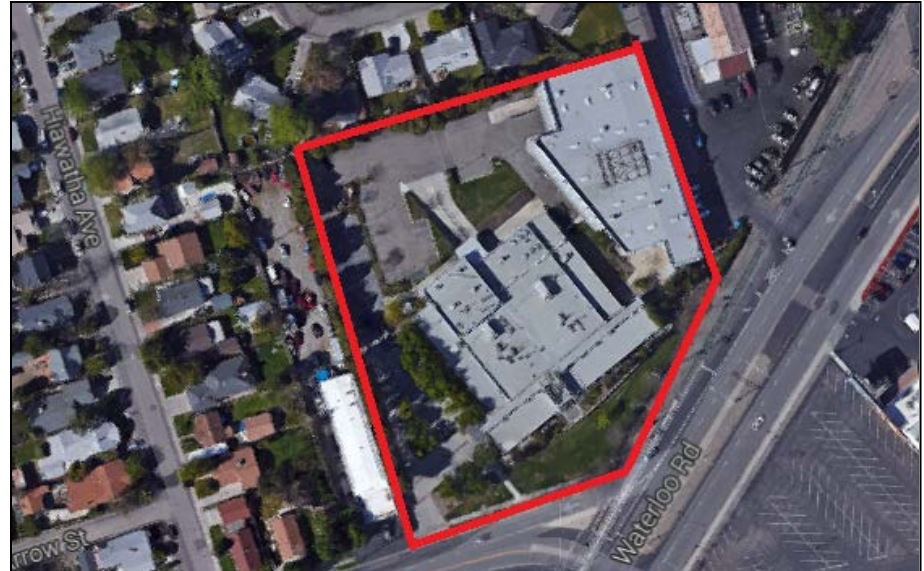
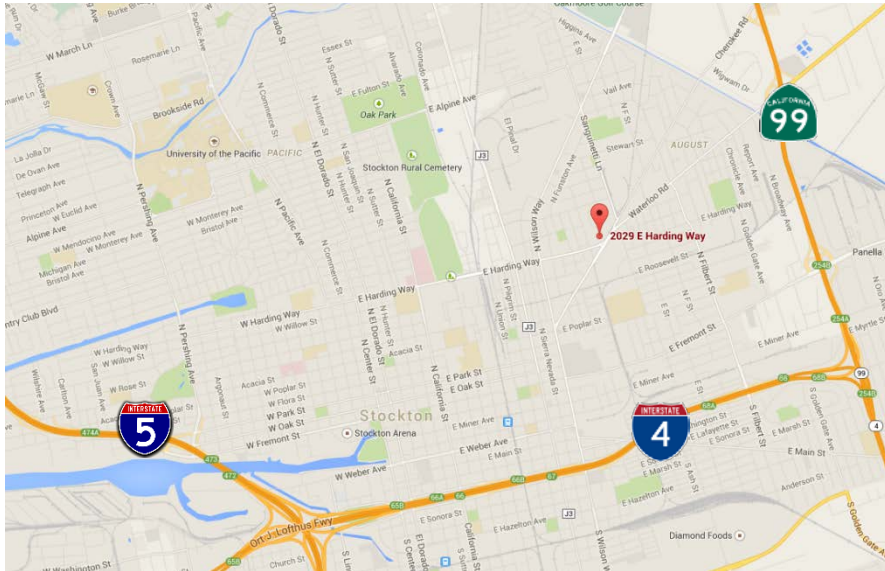
Aerial Map



Property Details

LAB / R&D	
Size:	25,866 SF
Description:	<ul style="list-style-type: none"> • 1 Dock High Door • Skylights • Power: 1600 Amps, 277/480 V, 3 Phase • Sprinklered

Processing and Office	
Size:	19,639 SF
Description:	<ul style="list-style-type: none"> • 144 SF Office • Four Grade Level Doors • One Dock High Door • 18'-23' Clear Height • 2000 Amps, 270/480 V, 3 Phase Power • Metal Halide Lighting • Skylights



Property Photos

