

AVAILABLE FOR SALE

6.68± ACRE YARD - STOCKTON, CA



LOCATION: 4300 East Mariposa Road
Stockton, CA

SIZE: 6.68± Acres

BUILDINGS: **A:** 2,108±sf metal shop
2 drive-in doors
B: 1,200±sf metal shop
2 drive- doors
C: 1,600±sf metal shed/
pole barn

APN: 179-560-21

ZONING: I-L (Industrial, Limited)
San Joaquin County

COMMENTS:

- Large yard plus three (3) metal shop buildings.
- Fenced gravel and dirt yard area
- Septic and well in place
- Approximately ½ mile east of Hwy 99
- Approximately 2.5 miles west of BNSF Intermodal facility
- Ideal for trailer, equipment or materials yard

SALES PRICE: \$675,000

For Further Information, Contact

LEE & ASSOCIATES-CENTRAL VALLEY, INC.

Jim Martin, SIOR

DRE #01214270

jmartin@lee-associates.com

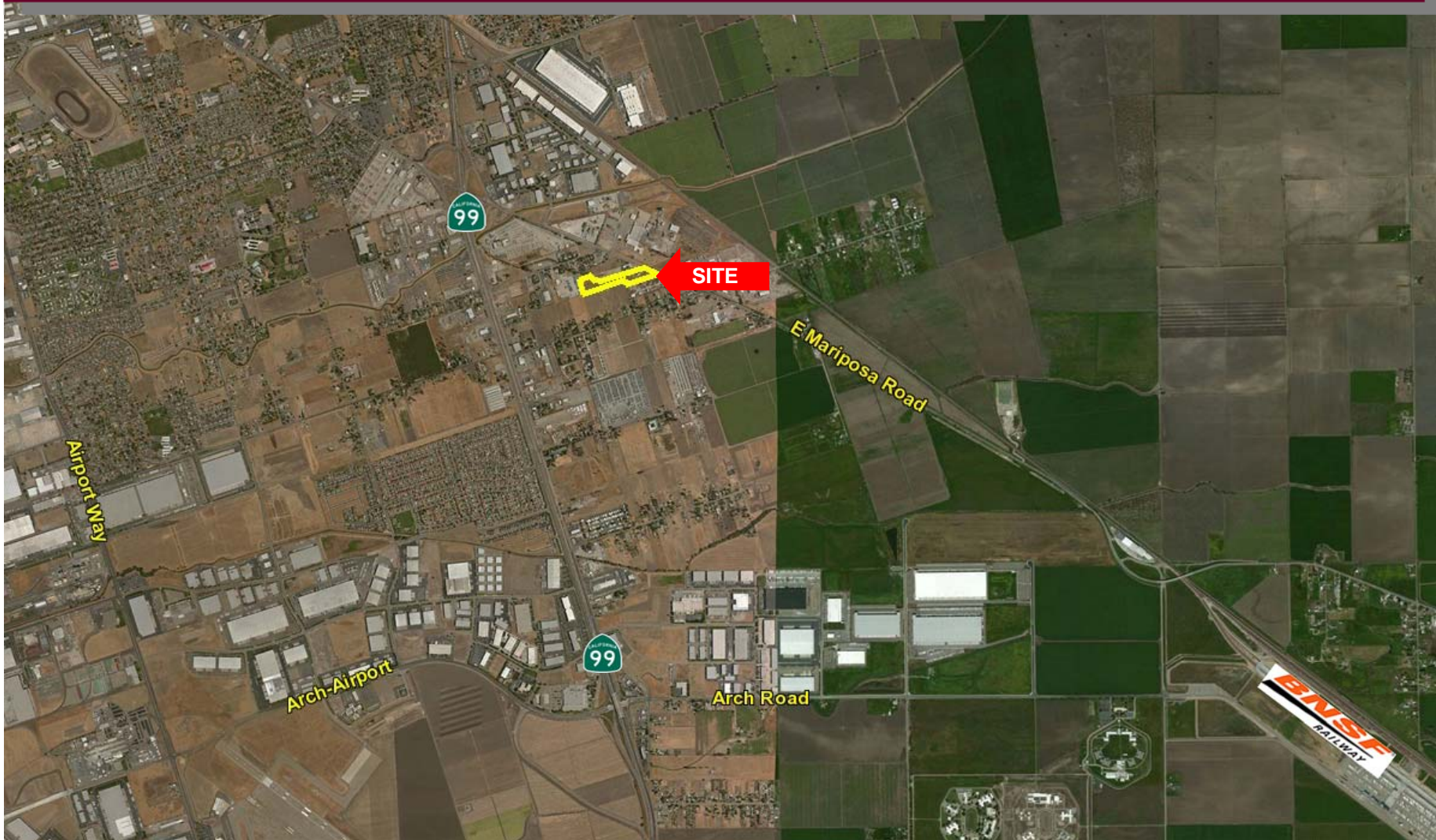
Direct: 209-983-4088 | Office: 209-983-1111



COMMERCIAL REAL ESTATE SERVICES

No warranty or representation is made to the accuracy of the foregoing information. Terms of sale, lease and availability are subject to change or withdrawal without notice.

6.68± ACRE YARD FOR SALE 4300 E. MARIPOSA ROAD, STOCKTON, CALIFORNIA



LEE & ASSOCIATES-CENTRAL VALLEY, INC.

Jim Martin, SIOR

BRE #01214270

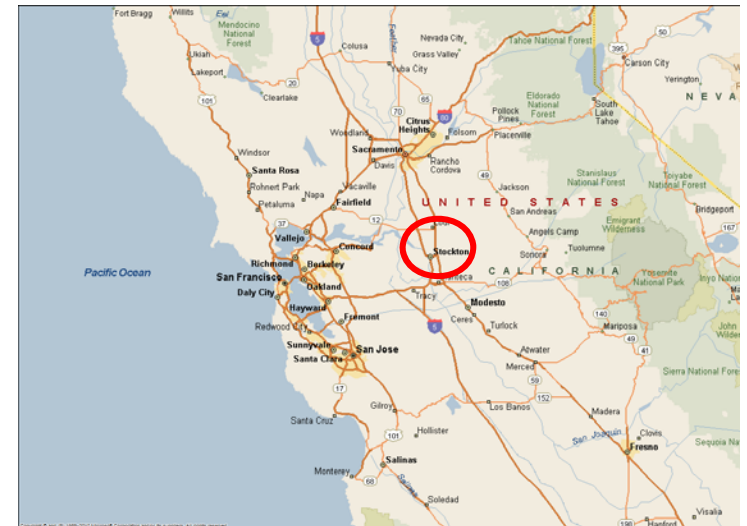
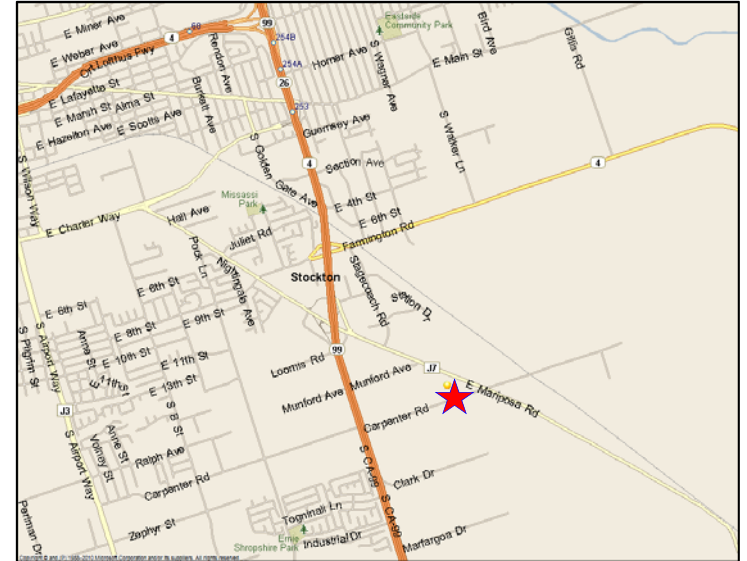
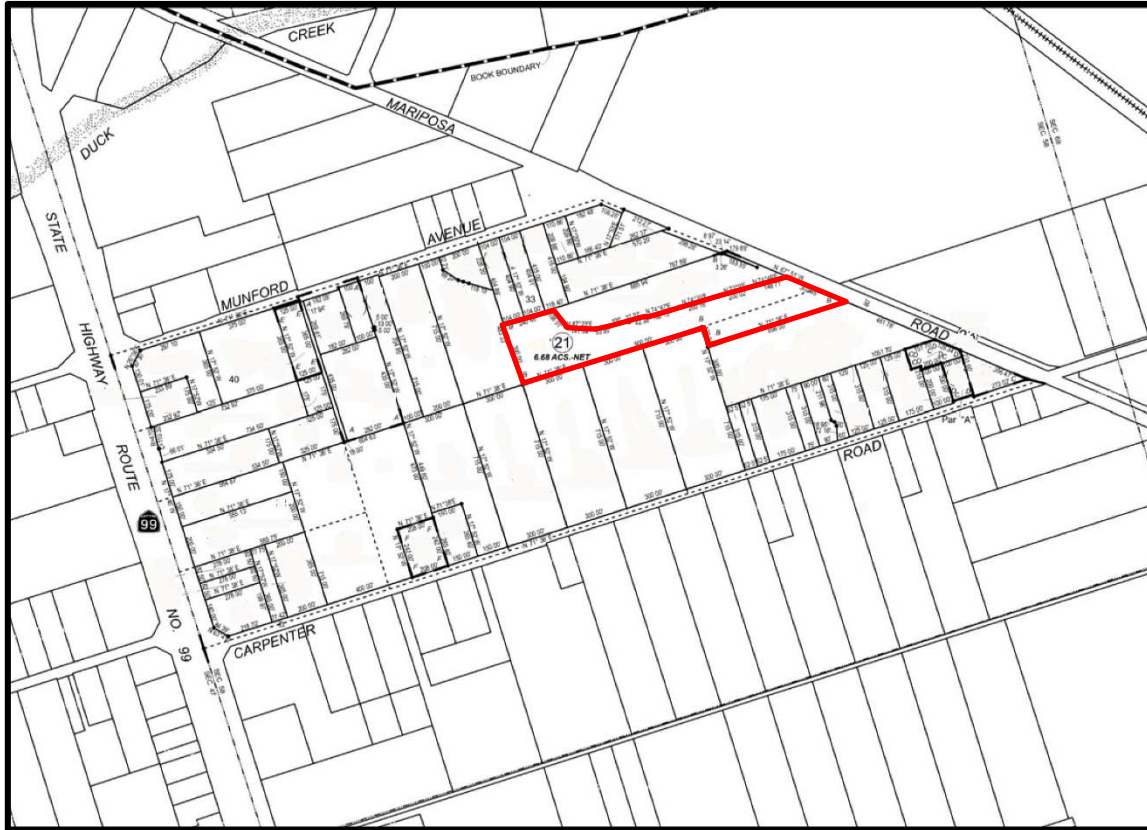
jmartin@lee-associates.com

Direct: 209-983-4088 | Office: 209-983-11

 **LEE &
ASSOCIATES®**
COMMERCIAL REAL ESTATE SERVICES

No warranty or representation is made to the accuracy of the foregoing information. Terms of sale, lease and availability are subject to change or withdrawal without notice.

6.68± ACRE YARD FOR SALE 4300 E. MARIPOSA ROAD, STOCKTON, CALIFORNIA



LEE & ASSOCIATES-CENTRAL VALLEY, INC.

Jim Martin, SIOR
BRE #01214270

jmartin@lee-associates.com

Direct: 209-983-4088 | Office: 209-983-11

