

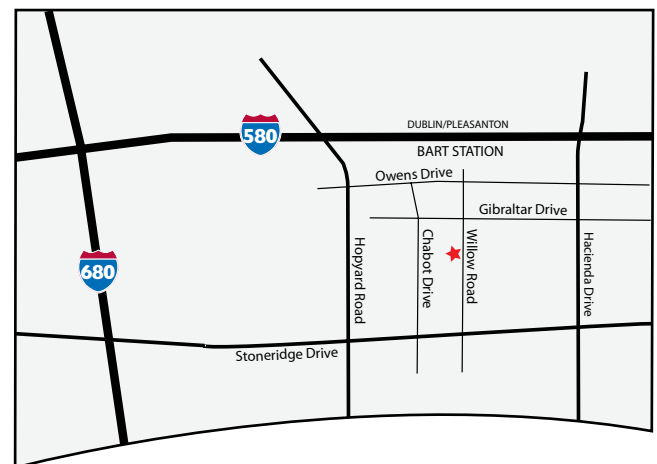
Ideal User/Investor Building For Sale



4670 Willow Road, Pleasanton, CA

FEATURES:

- Approximately 44,518 RSF Total, with up to 32,000± RSF Available for Lease
- Two-Story Building
- Tuscan Villa Style Construction with Courtyard and Fountain
- Highest Quality Building on the market
- Walking Distance to BART and Numerous Amenities
- Excellent Freeway Access
- Prestigious Location within Hacienda Business Park
- Roll-up Door with Storage Area
- Approximately 3.75/1,000 RSF Parking



FOR MORE INFORMATION PLEASE CONTACT:

TED HELGANS
(925)227-6202
thelgans@colliersparrish.com

AMY FAZIO
(925) 227-6241
afazio@colliersparrish.com

CHIP WISER
(925) 460-8923
chip@cenprop.com

LORI HONDA, CCIM
(925) 227-6261
lhonda@colliersparrish.com

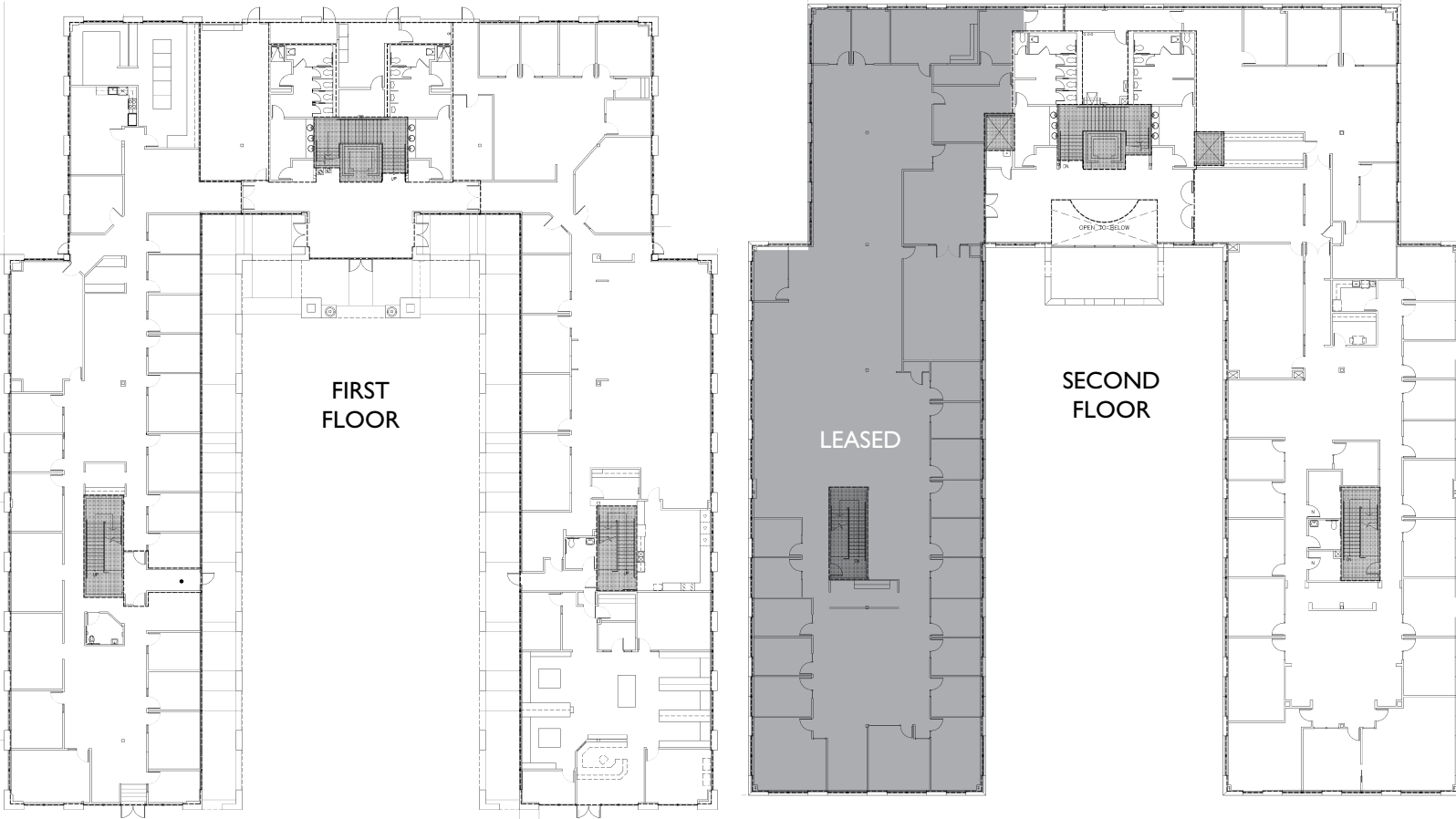


5050 Hopyard Rd. #180
Pleasanton, CA 94588
Ph: 925-463-2300
Fx: 925-463-0747



Ideal User/Investor Building For Sale

FLOOR PLANS



5050 Hopyard Rd. #180
Pleasanton, CA 94588
Ph: 925-463-2300
Fx: 925-463-0747



FOR MORE INFORMATION PLEASE CONTACT:

TED HELGANS
(925)227-6202
thelgans@colliersparrish.com

CHIP WISER
(925) 460-8923
chip@cenprop.com

AMY FAZIO
(925) 227-6241
afazio@colliersparrish.com

LORI HONDA, CCIM
(925) 227-6261
lhonda@colliersparrish.com

Ideal User/Investor Building For Sale



5050 Hopyard Rd. #180
Pleasanton, CA 94588
Ph: 925-463-2300
Fx: 925-463-0747



FOR MORE INFORMATION PLEASE CONTACT:

TED HELGANS
(925)227-6202
thelgans@colliersparrish.com

AMY FAZIO
(925) 227-6241
afazio@colliersparrish.com

CHIP WISER
(925) 460-8923
chip@cenprop.com

LORI HONDA, CCIM
(925) 227-6261
lhonda@colliersparrish.com