

## Peppertree Plaza Shopping Center

### Available:

- 980 Murrieta Blvd. 1,223± SF**
- 986 Murrieta Blvd. 1,223± SF**
- 988 Murrieta Blvd. 1,223± SF (Former Restaurant Space)**
- 861 E. Stanley Blvd. 900± SF (Former Nail Salon)**

### Features:

- Anchored by Nob Hill Foods and Rite Aid
- Established neighborhood center located at the corner of Stanley Blvd. and Murrieta Blvd.
- Surrounded by Livermore's residential wine growing community
- Co-Tenants include: Subway, Fantastic Sam's, Carl's Jr., and Taco Bell
- Seeking tanning salon, coffee shop, general retail, and possible restaurant tenants
- Abundant parking

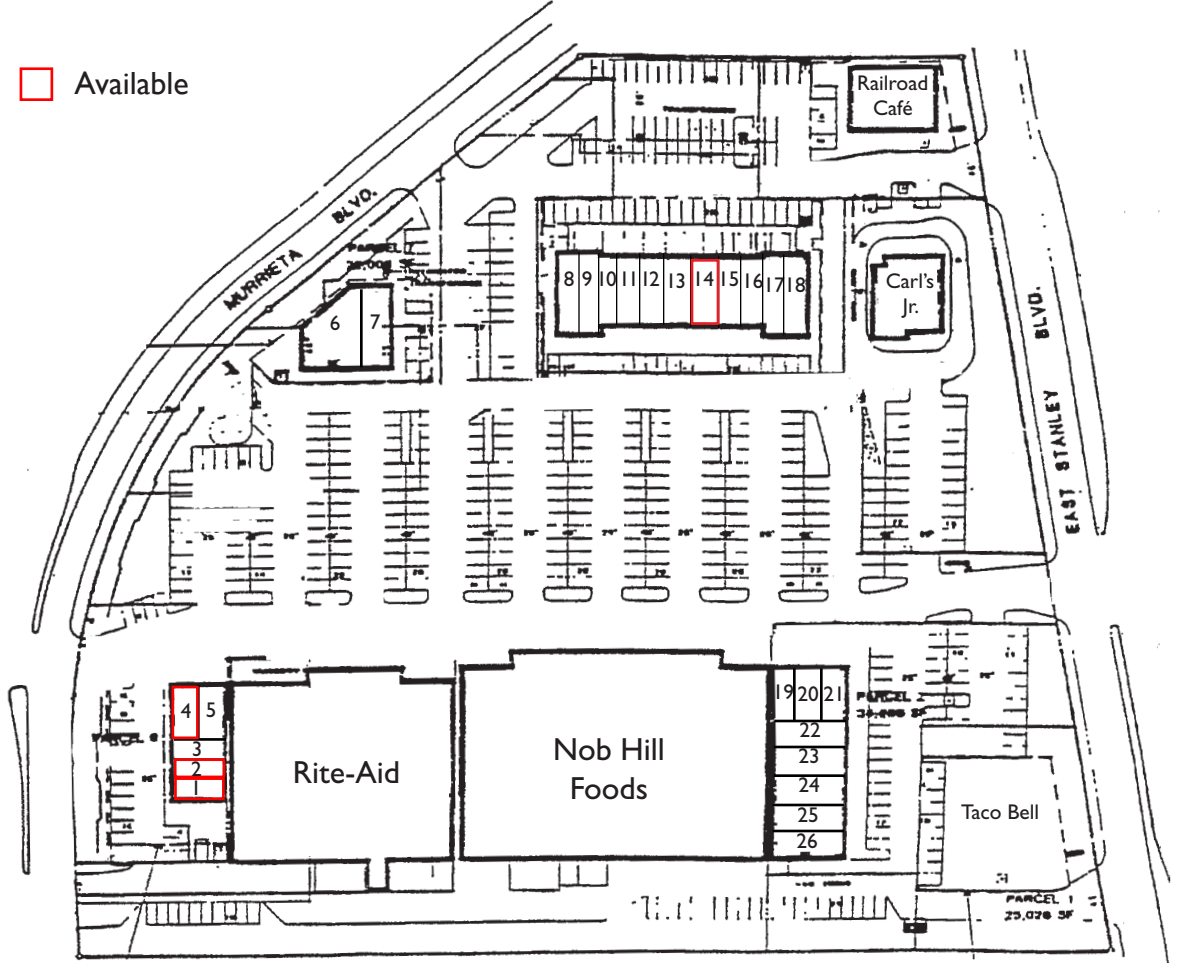


### Demographics:

	<u>1 Mile</u>	<u>3 Mile</u>	<u>5 Mile</u>
Population:	6,082	26,985	59,806
Daytime Population	21,973	62,758	111,238
Average HH Income	\$91,351	\$103,727	\$112,886



Available



### TENANT ROSTER

- 1 **VACANT - 1,223± SF (Former Restaurant)**
- 2 **VACANT - 1,223± SF**
- 3 Classic Images Hair Design
- 4 **VACANT - 1,223± SF**
- 5 Best New York Pizza
- 6 Armed Forces Recruiting
- 7 Pure Water
- 8 Superior Check Cashing
- 9 UPS Store
- 10 Special Dry Cleaners
- 11 First Bite New York Pizza
- 12 S & B Liquors - 2,100± SF
- 13 Best Donuts - 900± SF
- 14 **VACANT - 900± SF (Former Nail Salon)**
- 15 Livermore Smoke Shop

- 16 Paradise Ice Cream
- 17 Dentist
- 18 Fantastic Sams
- 19 Beauty Supplies Plus
- 20 Supercuts
- 21 Subway Sandwich
- 22 Tutoring Club
- 23 California Check Cashing
- 24 Hanabashi Japan Restaurant
- 25 Dry Cleaners
- 26 Nail & Design

### PAD TENANTS

- Railroad Café
- Carl's Jr.
- Taco Bell

FOR LEASE