

HIGHWAY FRONTAGE OFFICE SPACE FOR LEASE

5681 REDWOOD DRIVE

ROHNERT PARK, CA

*** \$0.80 PSF**



Property Information

Building Size: ±13,392 Square Feet

Available Space: ±2,500 Square Feet

Asking Rent: \$0.80 per sq. ft. Gross

- Highlights**
- Prominent Highway 101 Signage
 - On-site parking
 - High identity location
 - Private offices
 - Conference room & break room
 - Back office work area
 - Efficient floor plan
 - *Based on an Effective Rental Rate*



Contact Exclusive Agents:

Sandy Swallow
707.535.2990
sswallow@colliersparrish.com

Andrew Cameron
707.535.2995
acameron@colliersparrish.com



COLLIERS INTERNATIONAL
600 BICENTENNIAL WAY, SUITE 200, SANTA ROSA, 95403 • 707/535-2980

The information contained herein has been obtained from sources we deem reliable, however, we cannot guarantee it.

HIGHWAY FRONTAGE OFFICE SPACE FOR LEASE

5681 REDWOOD DRIVE

SANTA ROSA, CA

General Description:

Total Building s.f.: ±13,392 Square Feet

Rentable Space: ±2,500 Square Feet

Address: 5681 Redwood Drive

City: Rohnert Park, CA

User Space: Office

Rent: \$0.80 per sq. ft. Gross

Description of Building:

This 13,392 sq ft building is a Class B office building zoned Industrial with office overlay and features ample on-site parking, efficient floor plan with six private offices, a conference room, break room, back office work area, cooled data/telecom room, and a reception space at the entrance to the suite.

Description of Location:

Located on Redwood Drive this building provides excellent exposure to Hwy. 101 providing the opportunity for strong business identity and great access to Hwy. 101. There are plenty of local business amenities including restaurant, banks, and retail shopping all within close proximity.



Contact Exclusive Agents:

Sandy Swallow

707.535.2990

sswallow@colliersparrish.com

Andrew Cameron

707.535.2995

acameron@colliersparrish.com



COLLIERS INTERNATIONAL

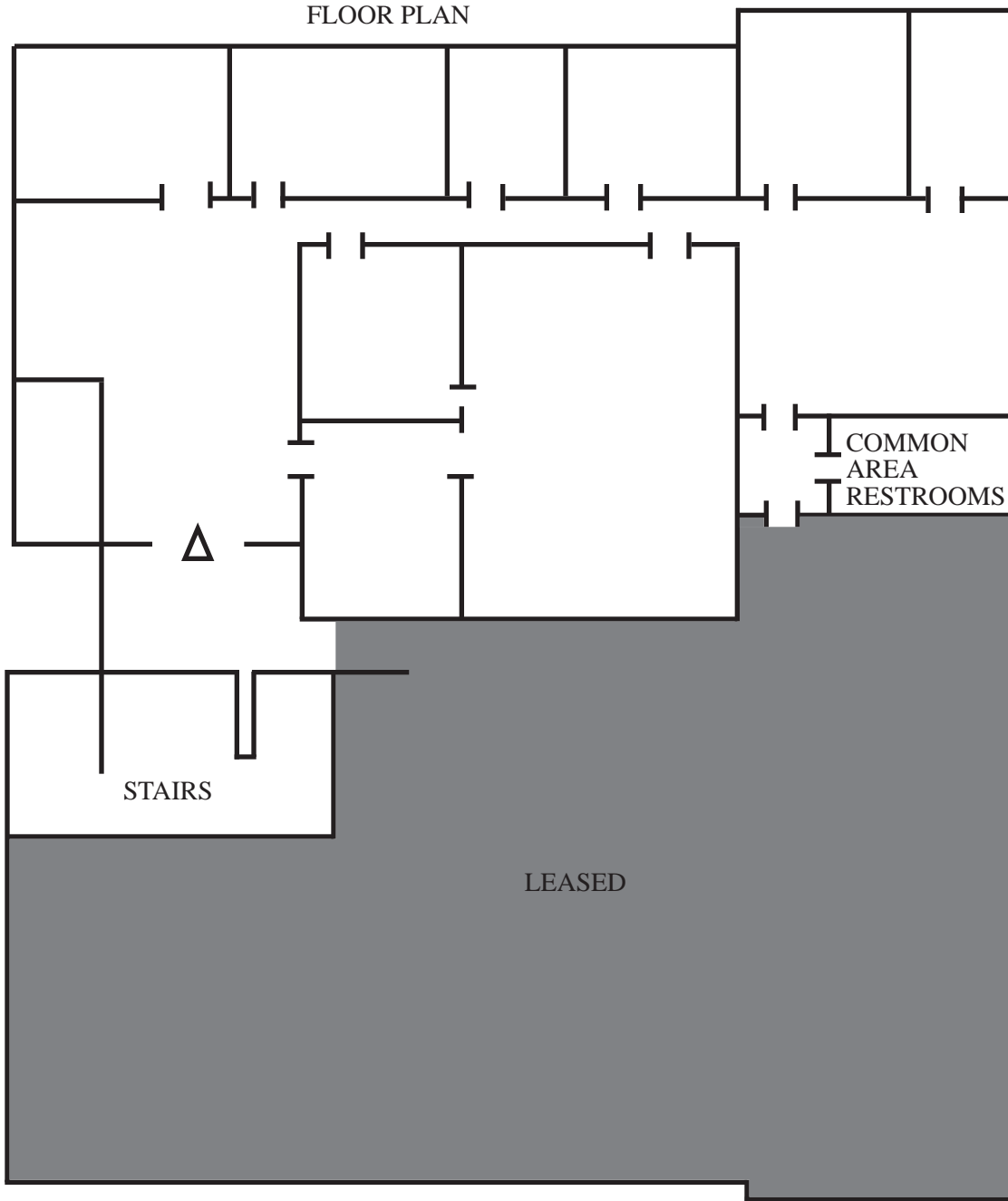
600 BICENTENNIAL WAY, SUITE 200, SANTA ROSA, 95403 • 707/535-2980

The information contained herein has been obtained from sources we deem reliable, however, we cannot guarantee it.

HIGHWAY FRONTAGE OFFICE SPACE FOR LEASE

5681 REDWOOD DRIVE

ROHNERT PARK, CA



NOT TO SCALE

Contact Exclusive Agents:

Sandy Swallow

707.535.2990

sswallow@colliersparrish.com

Andrew Cameron

707.535.2995

acameron@colliersparrish.com



COLLIERS INTERNATIONAL

600 BICENTENNIAL WAY, SUITE 200, SANTA ROSA, 95403 • 707/535-2980

The information contained herein has been obtained from sources we deem reliable, however, we cannot guarantee it.

HIGHWAY FRONTAGE OFFICE SPACE FOR LEASE

5681 REDWOOD DRIVE

ROHNERT PARK, CA



Contact Exclusive Agents:

Sandy Swallow

707.535.2990

sswallow@colliersparrish.com

Andrew Cameron

707.535.2995

acameron@colliersparrish.com



COLLIERS INTERNATIONAL

600 BICENTENNIAL WAY, SUITE 200, SANTA ROSA, 95403 • 707/535-2980

The information contained herein has been obtained from sources we deem reliable, however, we cannot guarantee it.