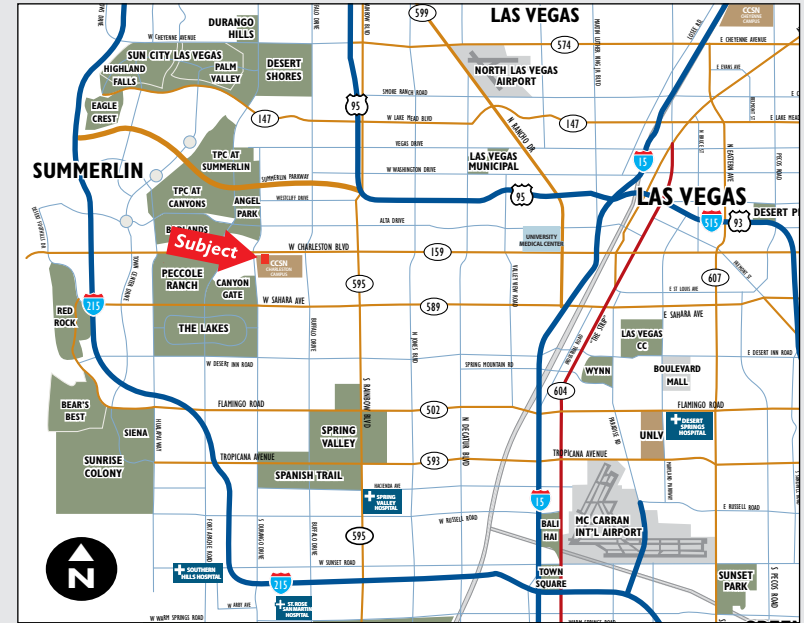


FOR SALE 5 GROSS ACRES > BANK OWNED

Summerlin Parkway & Durango Road



ASKING \$695,000 | LAS VEGAS | NEVADA



AREA OVERVIEW

The subject property fronts on Summerlin Parkway, just east of Durango Road. The property is surrounded by existing apartments, senior housing and assisted living. The property is accessible from Silver Sky Drive and N. Roland Wiley Road. The property entry point is from the end of partially improved cul-de-sac on Silver Sky Drive.

OFFER SUBMITTAL

ASKING \$695,000

- 30 day feasibility
- "As is/Where is"
- Zoning Contingency Potential
- 3% Outside Broker Commission
- No Bid Date

PARCEL INFORMATION

ACRES:	5.00
ZONING:	R 3
POTENTIAL:	RESIDENTIAL
UTILITIES:	TO SITE
SITE CONDITIONS:	RAW
T-R-S:	20-60-28
JURISDICTION:	LAS VEGAS
COMMISSIONER:	LARRY BROWN

Michael Stuart

michael.stuart@colliers.com

702.735.5700

3960 Howard Hughes Pkwy., Suite 150
 Las Vegas, Nevada USA 89169
 T 702.735.5700 F 702.731.5709
 www.colliers.com

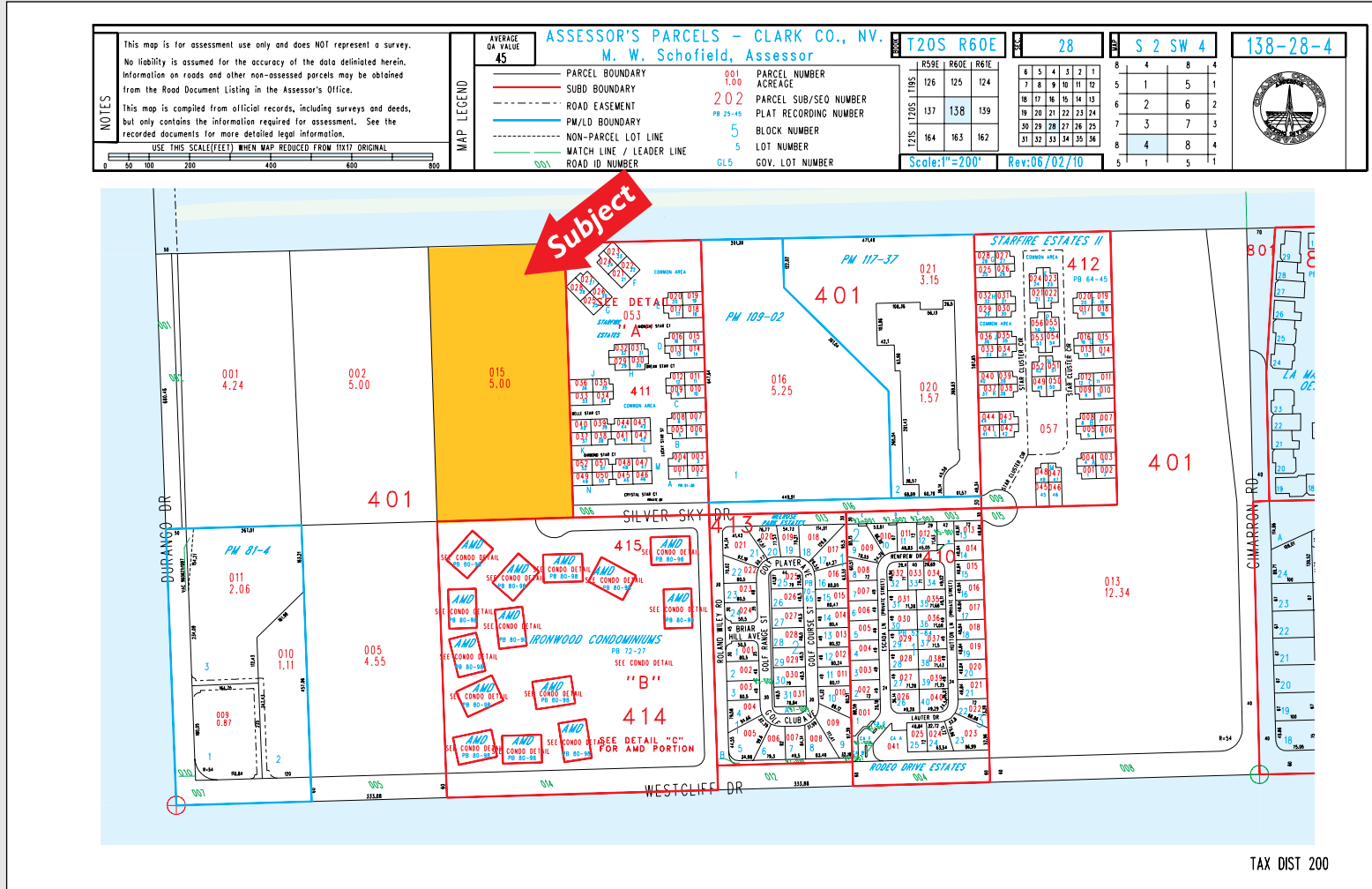
The information furnished has been obtained from sources we deem reliable and is submitted subject to errors, omissions and changes. Although Colliers Nevada, LLC has no reason to doubt its accuracy, we do not guarantee it. All information should be verified by the recipient prior to lease, purchase, exchange or execution of legal documents.

FOR SALE 5 GROSS ACRES > BANK OWNED

Summerlin Parkway & Durango Road



ASKING \$695,000 | LAS VEGAS | NEVADA



Michael Stuart
 michael.stuart@colliers.com
 702.735.5700

The information furnished has been obtained from sources we deem reliable and is submitted subject to errors, omissions and changes. Although Colliers Nevada, LLC has no reason to doubt its accuracy, we do not guarantee it. All information should be verified by the recipient prior to lease, purchase, exchange or execution of legal documents.

3960 Howard Hughes Pkwy., Suite 150
 Las Vegas, Nevada USA 89169
 T 702.735.5700 F 702.731.5709
 www.colliers.com