

FOR LEASE

**9,147 R.S.F.
TOTAL AVAILABLE**

**EXCLUSIVE AGENT:
MARK GREINER**
mgreiner@colliersoxford.com



**TERRACE II, SUITE 100
2700 VIA FORTUNA DRIVE
AUSTIN, TX 78746
512-474-2400
FAX: 512-477-3037
www.colliersoxford.com**

Barton Oaks Plaza IV **901 South MoPac Expressway**



Available Space: 2nd Floor – 9,147 RSF approx.
(See back for floor plan.)

Date Available: Immediate

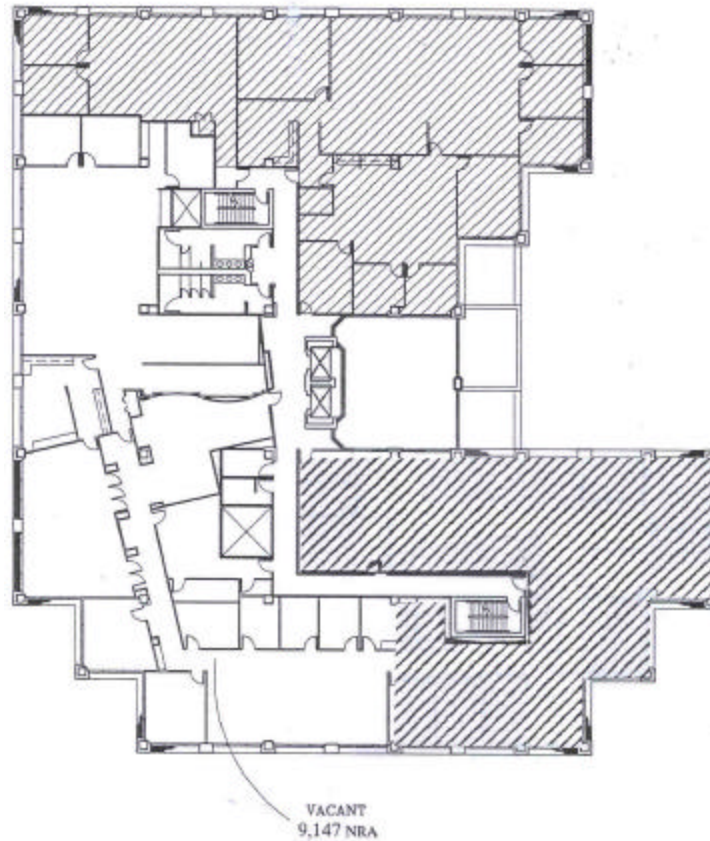
Parking: 3.5/1,000 square feet
Free covered unreserved parking.

Features:

- ~Great downtown Austin skyline views
- ~Elevator lobby exposure
- ~Highly improved interior finishes
- ~Full height granite lobby
- ~Attached building garage
- ~Fully sprinklered
- ~Easy access from MoPac to downtown, Loop 360, and the airport
- ~Adjacent to Barton Creek Hike & Bike Trail.

Please call to schedule an appointment.

THIS INFORMATION HAS BEEN OBTAINED FROM SOURCES WE DEEM RELIABLE AND IS SUBMITTED SUBJECT TO ERRORS, OMISSIONS, AND CHANGES. ALTHOUGH COLLIERS OXFORD HAS NO REASON TO DOUBT ITS ACCURACY, WE DO NOT GUARANTEE IT. ALL INFORMATION SHOULD BE VERIFIED BY THE RECIPIENT PRIOR TO LEASE, PURCHASE, OR EXECUTION OF LEGAL DOCUMENTS.



BARTON OAKS PLAZA IV - 2nd Floor

THIS INFORMATION HAS BEEN OBTAINED FROM SOURCES WE DEEM RELIABLE AND IS SUBMITTED SUBJECT TO ERRORS, OMISSIONS, AND CHANGES. ALTHOUGH COLLIERS OXFORD HAS NO REASON TO DOUBT ITS ACCURACY, WE DO NOT GUARANTEE IT. ALL INFORMATION SHOULD BE VERIFIED BY THE RECIPIENT PRIOR TO LEASE PURCHASE OR EXECUTION OF LEGAL DOCUMENTS.