



# For Lease | Office Space Lafayette Circle

251 Lafayette Circle, Lafayette, CA

Copyright © 2022 Colliers International.  
Information herein has been obtained from sources deemed reliable,  
however its accuracy cannot be guaranteed. The user is required to  
conduct their own due diligence and verification.



**Peter Gutzwiller**

Vice President

+1 925 279 4604

[peter.gutzwiller@colliers.com](mailto:peter.gutzwiller@colliers.com)

CA Lic. 01338286

# Overview

- Central Lafayette location
- Walking distance to BART, shopping and dining
- Abundant street parking, 3/1,000 ratio

## Available Space

- Suite 210 | ±1,306 RSF (available 7/1)
- Suite 330 | ±1,845 RSF

## Peter Gutzwiller

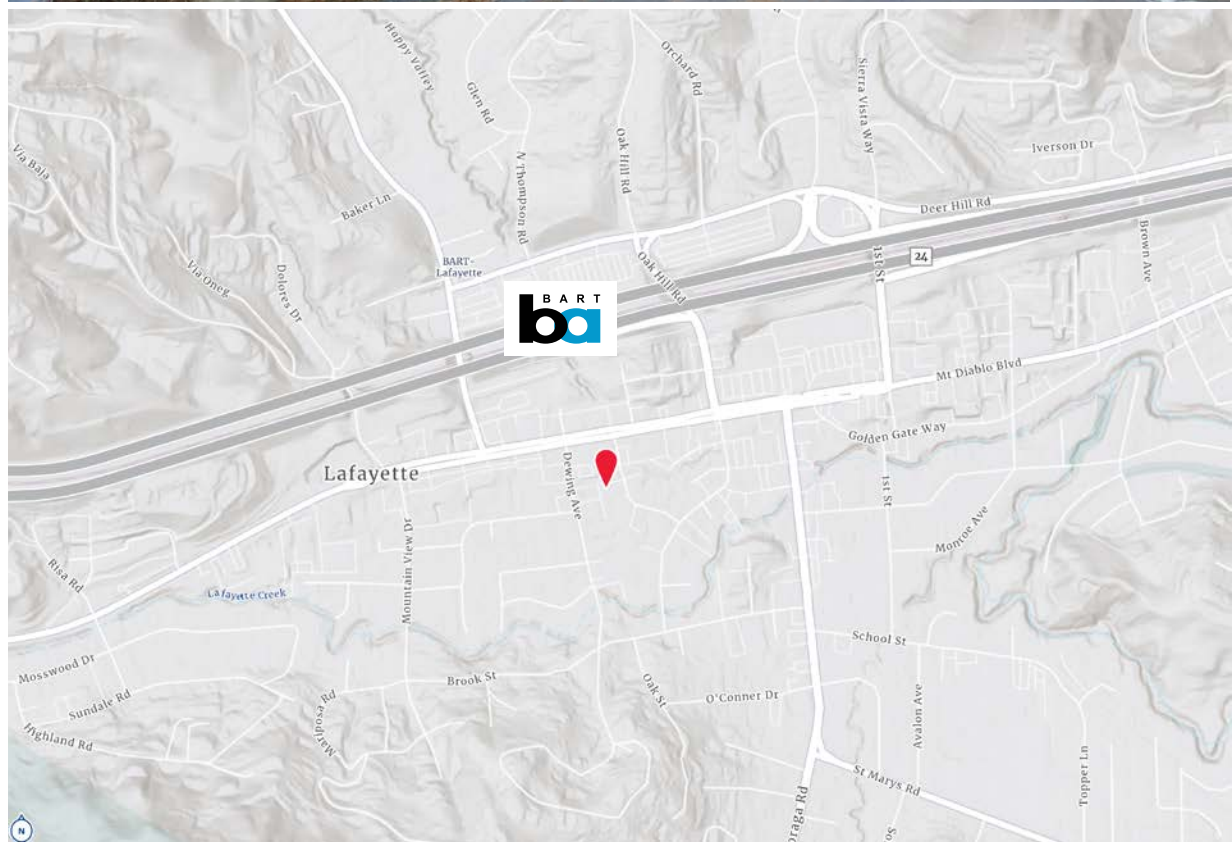
Vice President

+1 925 279 4604

[peter.gutzwiller@colliers.com](mailto:peter.gutzwiller@colliers.com)

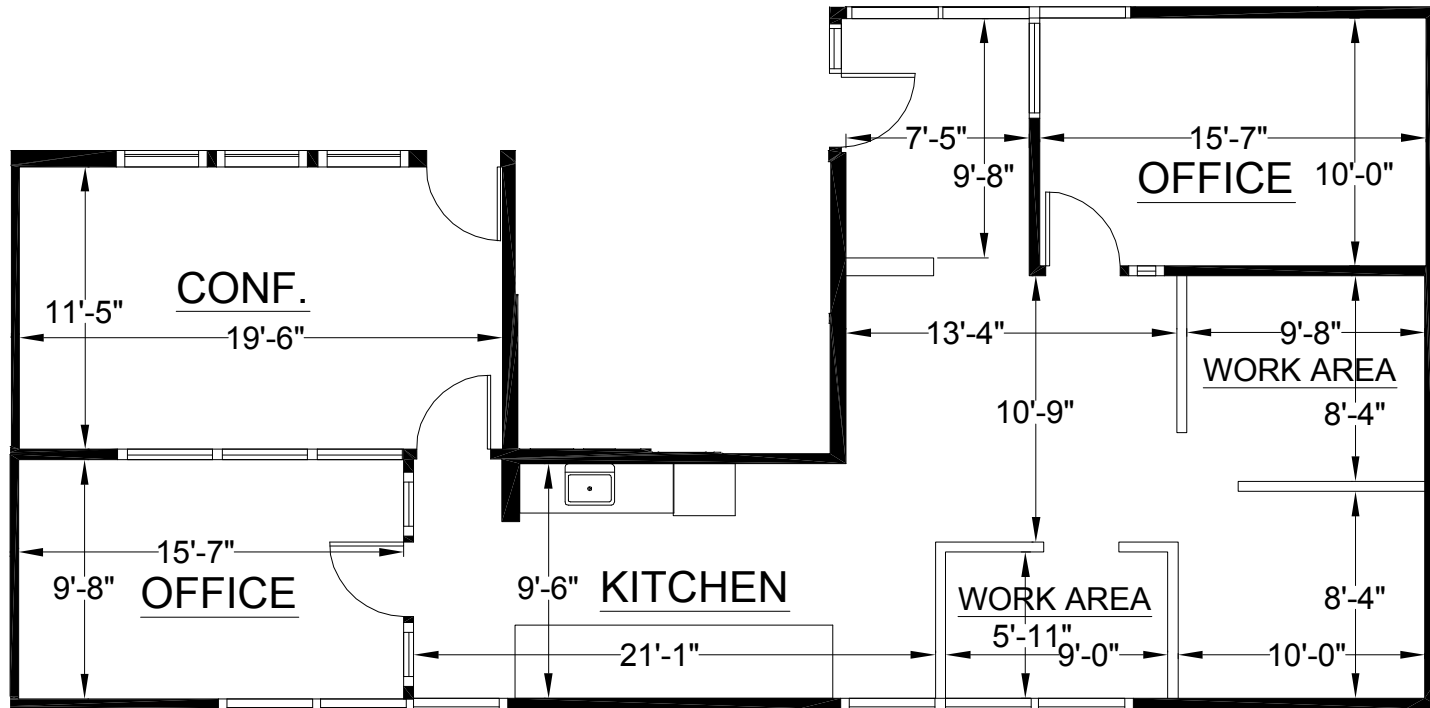
CA Lic. 01338286

Copyright © 2022 Colliers International. Information herein has been obtained from sources deemed reliable, however its accuracy cannot be guaranteed. The user is required to conduct their own due diligence and verification.



# Suite 210

# ±1,306 RSF



## Peter Gutzwiller

Vice President

+1 925 279 4604

[peter.gutzwiller@colliers.com](mailto:peter.gutzwiller@colliers.com)

CA Lic. 01338286

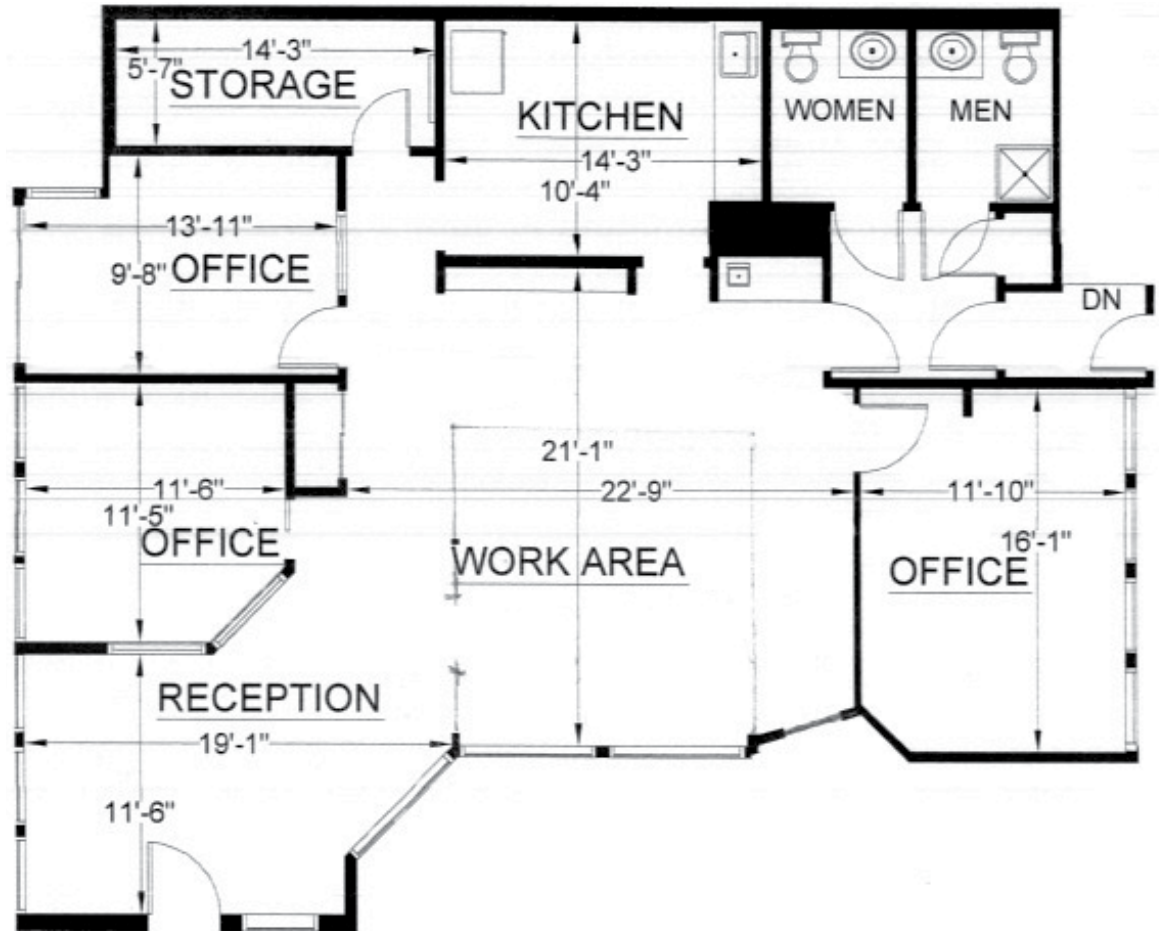
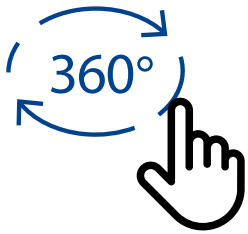


Copyright © 2022 Colliers International. Information herein has been obtained from sources deemed reliable, however its accuracy cannot be guaranteed. The user is required to conduct their own due diligence and verification.

\* Not to scale

# Suite 330

±1,845 RSF



**Peter Gutzwiller**

Vice President

+1 925 279 4604

[peter.gutzwiller@colliers.com](mailto:peter.gutzwiller@colliers.com)

CA Lic. 01338286



Copyright © 2022 Colliers International. Information herein has been obtained from sources deemed reliable, however its accuracy cannot be guaranteed. The user is required to conduct their own due diligence and verification.

\* Not to scale