



For Lease | Medical Office Space

Valley Center Medical & Dental

401 Gregory Lane | Pleasant Hill, CA

Contact
Brokers

Eric Erickson, CCIM SIOR
Senior Vice President
CA License No. 01177336
eric.erickson@colliers.com
+1 925 279 5580

Brian Clack
Vice President
CA License No. 01416362
brian.clack@colliers.com
Direct: +1 925 279 4654
Mobile: +1 415 407 7998

Copyright © 2023 Colliers.
Information herein has been obtained from sources deemed reliable, however its accuracy cannot be guaranteed.
The user is required to conduct their own due diligence and verification.

401 Gregory Lane | Pleasant Hill, CA

Overview

Highlights



Two floors with elevator access



Two medical labs on the property



Currently 20 tenants on site,
mostly dental and medical offices




Over 4/1,000 parking
**Additional parking available
at the church across the street*



Central landscaped courtyard
with shade trees



Available Spaces

Suite	Rentable Square Feet	 Virtual Tour
226	±1,946 RSF	Tour Suite »
246	±881 RSF	Tour Suite »



Copyright © 2023 Colliers.
Information herein has been obtained from sources deemed reliable,
however its accuracy cannot be guaranteed. The user is required to
conduct their own due diligence and verification.

Location Overview



Sequoia Middle School

0.8 miles to 401 Gregory Lane

Pleasant Hill Parks & Recreation

Parking Structure ±662 Spaces

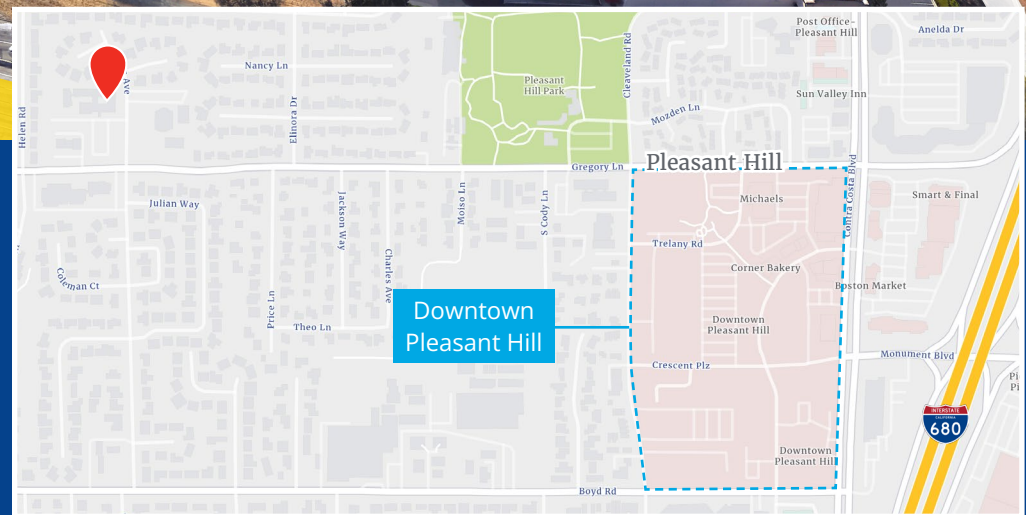
Contra Costa Boulevard

South to Walnut Creek
 Interstate 680
 North to Concord

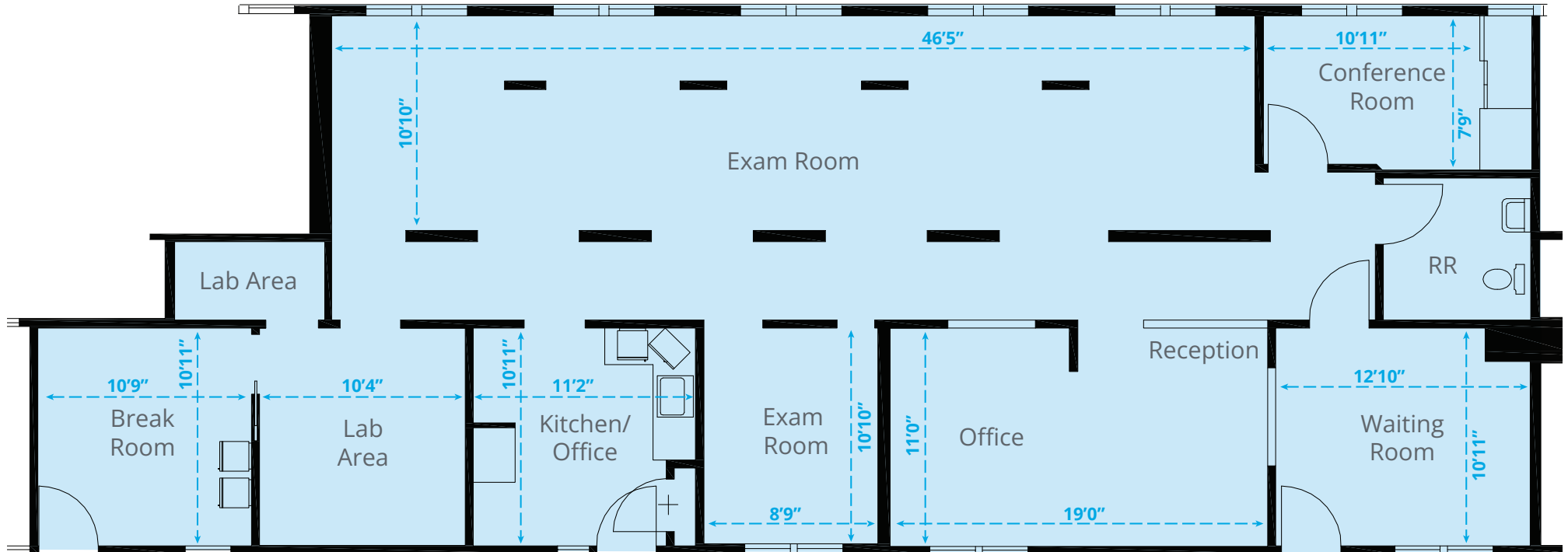
Centrally located in Contra Costa County, close to Downtown Pleasant Hill, Walnut Creek, Lafayette, and Martinez

Local Amenities

- Downtown Pleasant Hill: Just a couple blocks from this location, downtown boasts free parking and a variety of restaurants & shops
- Four pharmacies under a mile away
- Variety of child care providers nearby



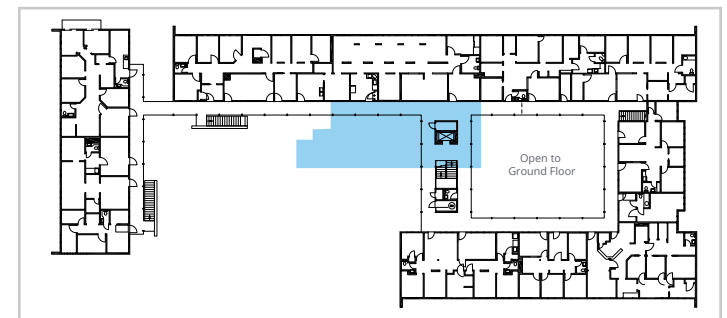
Floor Plan



Suite 226 | ±1,946 RSF

- \$2.80/RSF
- Net of PG&E and Janitorial
- Former Dental Office

Key Plan



401 Gregory Lane | Pleasant Hill, CA

Floor Plan

Suite 246 | ±881 RSF

- \$2.80/RSF
- Net of PG&E and Janitorial
- Newly renovated

[360° Take a Virtual Tour »](#)

Contact Brokers

Eric Erickson, CCIM SIOR

Senior Vice President
CA License No. 01177336
eric.erickson@colliers.com
+1 925 279 5580

Brian Clack

Vice President
CA License No. 01416362
brian.clack@colliers.com
Direct: +1 925 279 4654
Mobile: +1 415 407 7998

Copyright © 2023 Colliers.
Information herein has been obtained from sources deemed reliable, however its accuracy cannot be guaranteed. The user is required to conduct their own due diligence and verification.

Key Plan

