

Under New Ownership!



Updated Landscaping



Additional Exterior Lighting



Asphalt Repair and Striping



New Exterior Paint



Major overhaul of Air Conditioning Units



For Lease Downtown Office Space

1855 Olympic Blvd | Walnut Creek, CA

Contact Brokers

Brian Clack

Vice President

CA License No. 01416362

brian.clack@colliers.com

+1 925 279 4654

Eric Erickson CCIM SIOR

Senior Vice President

CA License No. 01177336

eric.erickson@colliers.com

+1 925 279 5580

Copyright © 2024 Colliers.

Information herein has been obtained from sources deemed reliable, however its accuracy cannot be guaranteed. The user is required to conduct their own due diligence and verification.



Property Overview



Highlights



Great downtown location



Walking distance to the core of Walnut Creek's shopping and dining scene



Easy on / off access to I-680 and Highway 24



Covered parking available

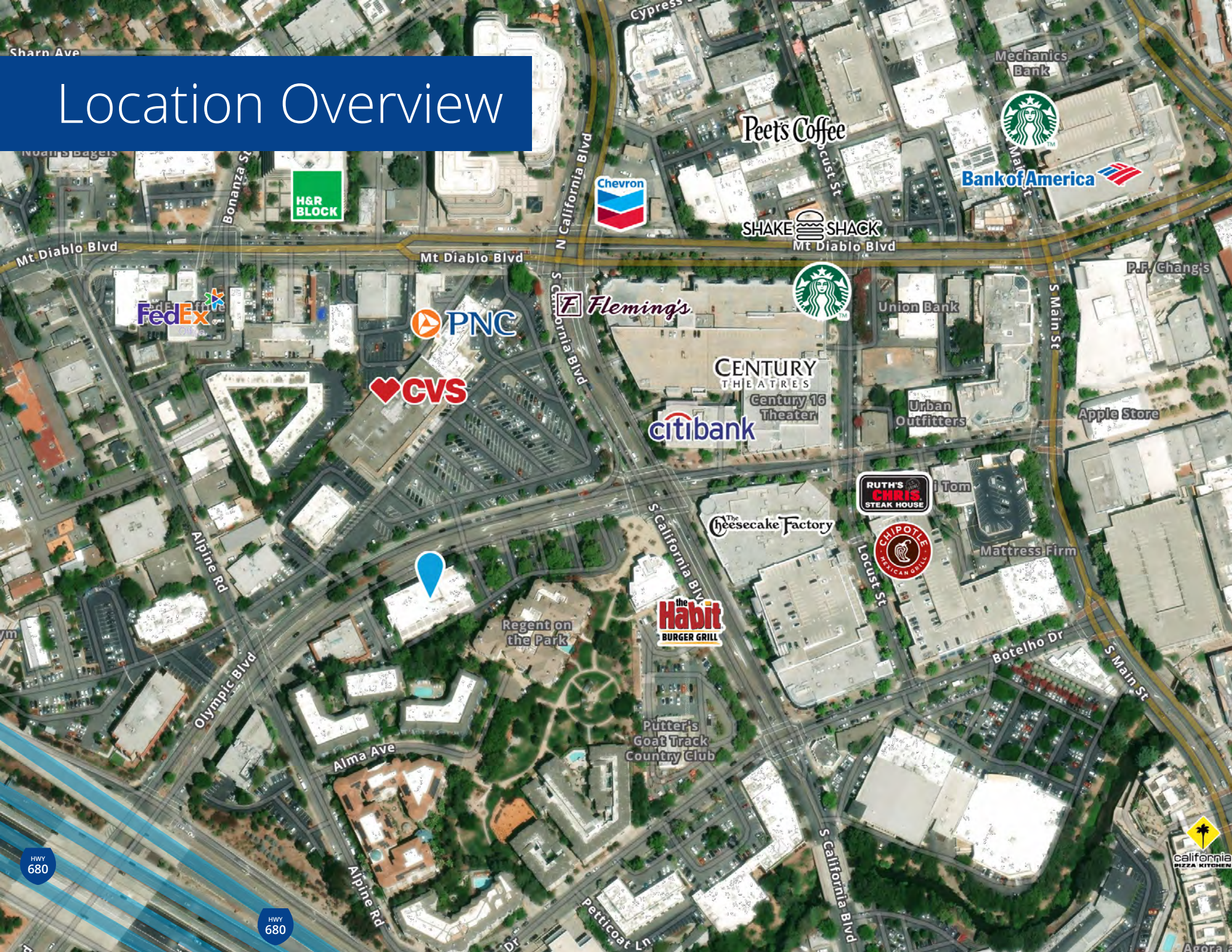


5% fee to procuring broker



Aggressive rates

Location Overview



Sharn Ave

Madis Bagels

Mt Diablo Blvd

Alpine Rd

Olympic Blvd

Alma Ave

Alpine Rd

HWY 680

Bonanza St

H&R BLOCK

Mt Diablo Blvd

FedEx

PNC

CVS

N California Blvd

Chevron

Fleming's

CENTURY THEATRES

Citibank

Century 16 Theater

S California Blvd

the Habit BURGER GRILL

Regent on the Park

Putter's Goat Track Country Club

The Cheesecake Factory

RUTH'S CHRIS STEAK HOUSE

CHIPOTLE MEXICAN BOWL

Mattress Firm

Union Bank

Urban Outfitters

Apple Store

P.F. Chang's

Mechanics Bank

Starbucks

Bank of America

Peet's Coffee

SHAKEShack

Starbucks

S Main St

Botelho Dr

S Main St

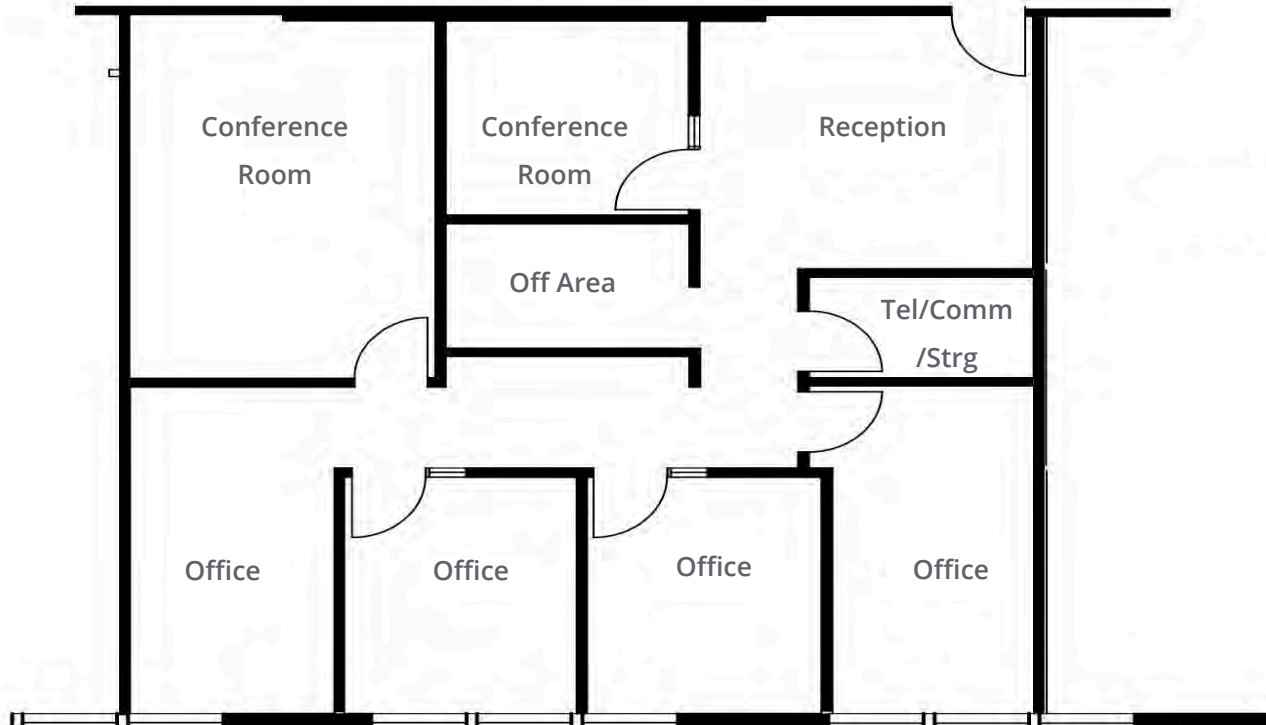
S California Blvd

Petticoat Ln

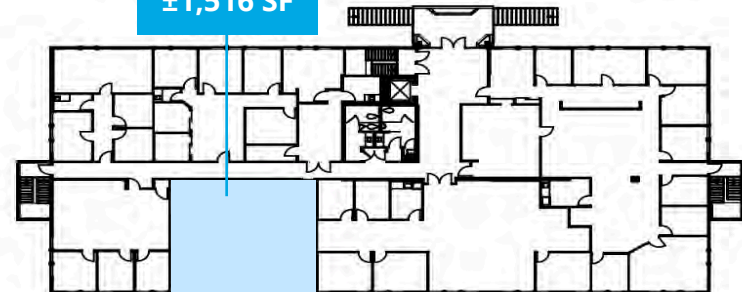
California PIZZA KITCHEN

Agora

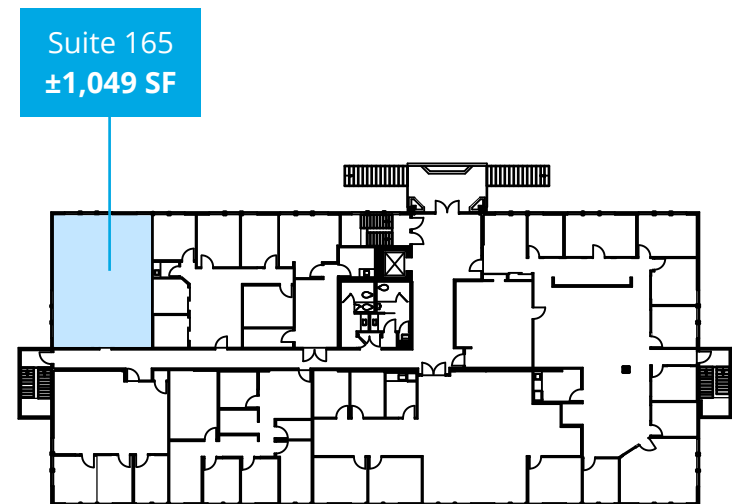
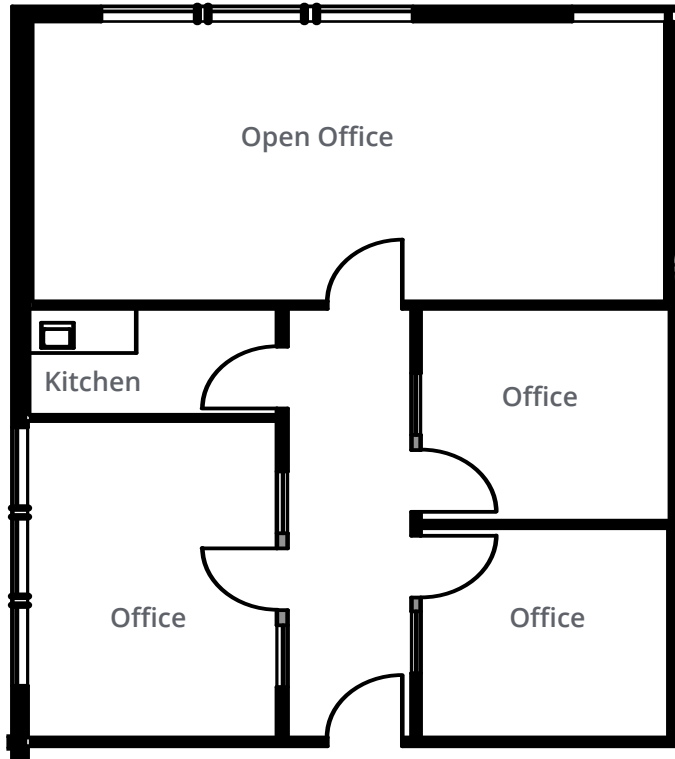
First Floor



Suite 125
±1,516 SF

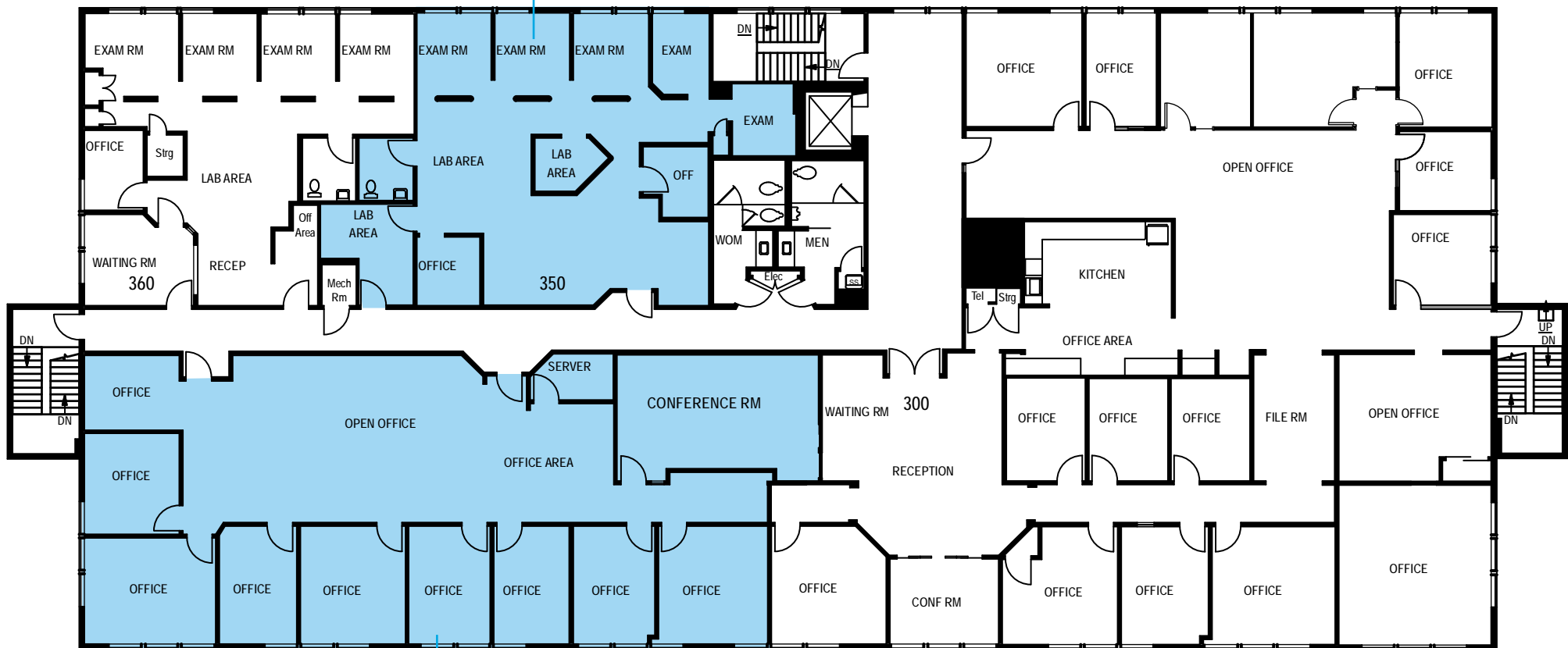


First Floor



Third Floor

Suite 350
±1,725 SF



Suite 320
±3,378 SF