



Fenced office complex  
with secured parking

Colliers

For Lease | Professional Office Space

# Civic Executive Park

1450 Civic Court | Concord, CA

## Contact Brokers

### Brian Clack

Vice President

CA License No. 01416362

brian.clack@colliers.com

Direct: +1 925 279 4654

Mobile: +1 415 407 7998

### Eric Erickson, CCIM SIOR

Senior Vice President

CA License No. 01177336

eric.erickson@colliers.com

+1 925 279 5580



1450 Civic Court | Concord, CA

# Overview

## Highlights



Park-like setting with walkway benches, and mature landscaping



ADA compliant access with elevator



Close to retail amenities



Parking 4/1,000



Easy access to Hwy 242 and I-680 on/off of Willow Pass Road

## Available Spaces

Building	Suite	Rentable Square Feet
A	200	±3,973 RSF
C	100	±3,976 RSF





# Location Overview



Diablo Valley College

**Veranda Shopping Center**

- IN-N-OUT BURGER
- Denny's
- McDonald's
- KFC
- Wendy's
- WHOLE FOODS MARKET
- SEPHORA
- SUPER DUPER
- TJ-maxx
- CITY SPORTS CLUBS

**Six Flags HURRICANE HARBOR CONCORD**

**Civic Executive Park**

**Sunvalley Mall**

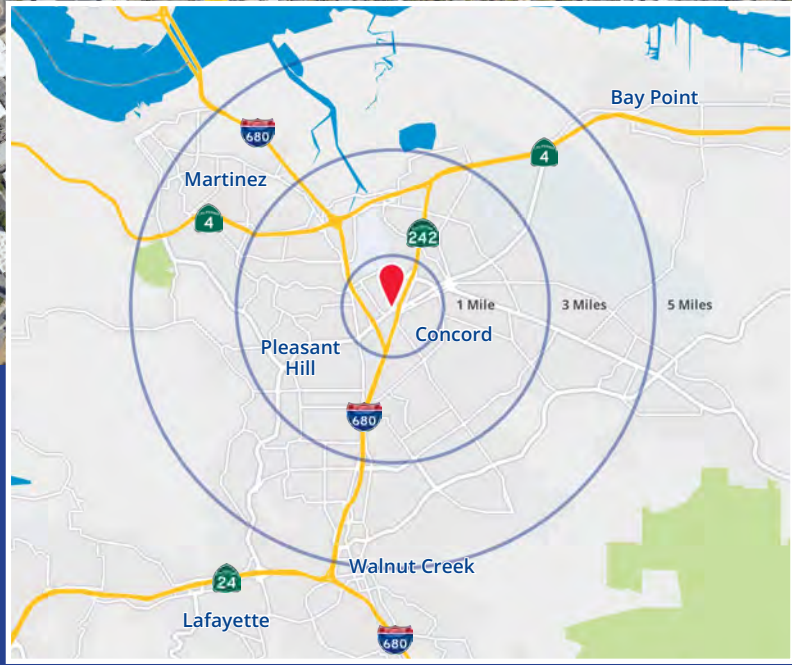
- SEARS
- MACYS
- ROUND1
- AMERICAN EAGLE OUTFITTERS
- JCPenney
- SHOEPALACE

**Willows Shopping Center**

- BENIHANA
- KREI
- PANERA BREAD
- HOBBY LOBBY
- LAZY DOG
- FOODRUCKERS
- OLD NAVY
- DAISO JAPAN
- Eureka Burger

**Park & Shop**

- JOANN
- 99¢ ONLY STORES
- STARBUCKS
- SUBWAY
- 99¢ RANCH MARKET
- LAS MONTAÑAS SUPERMARKETS
- 85°C
- RED WING
- UPS



## Contact Brokers

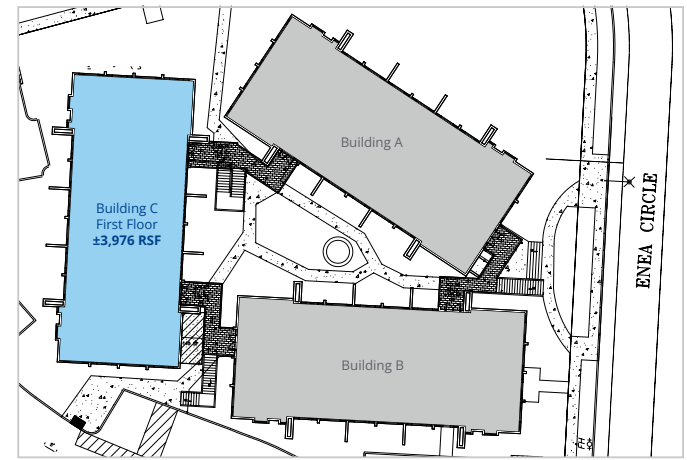
**Brian Clack**  
 Vice President  
 CA License No. 01416362  
 brian.clack@colliers.com  
 Direct: +1 925 279 4654  
 Mobile: +1 415 407 7998

**Eric Erickson, CCIM SIOR**  
 Senior Vice President  
 CA License No. 01177336  
 eric.erickson@colliers.com  
 +1 925 279 5580

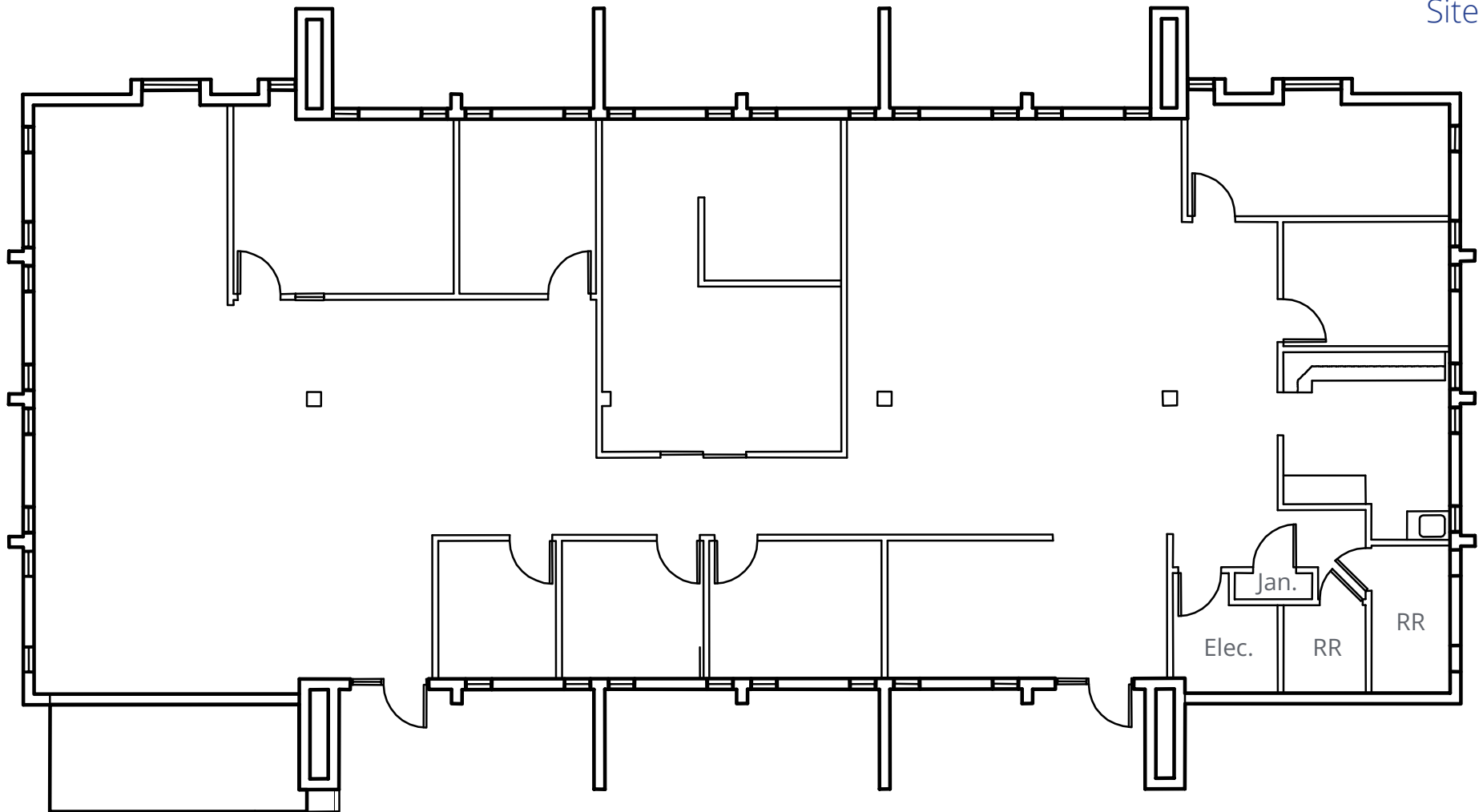


1450 Civic Court, Bldg. C | Concord, CA

First Floor  
±3,976 RSF

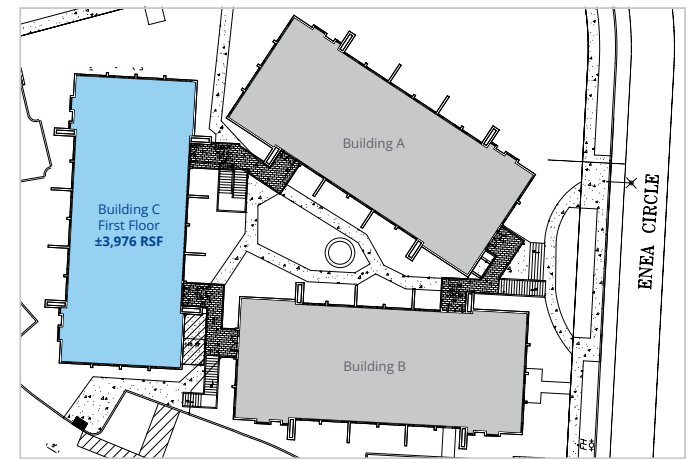


Site Plan

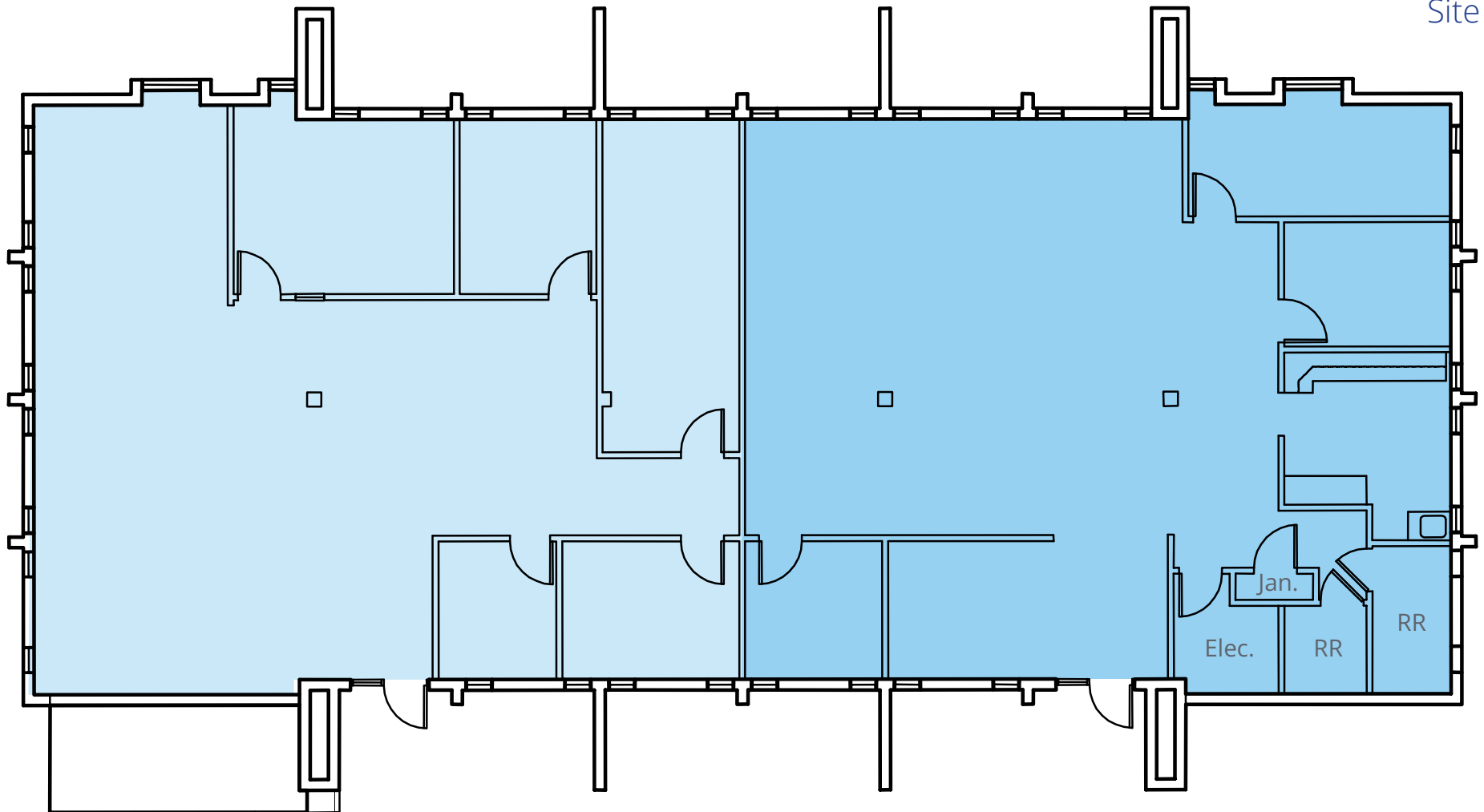


1450 Civic Court, Bldg. C | Concord, CA

# First Floor | $\pm 3,976$ RSF Hypothetical Demising

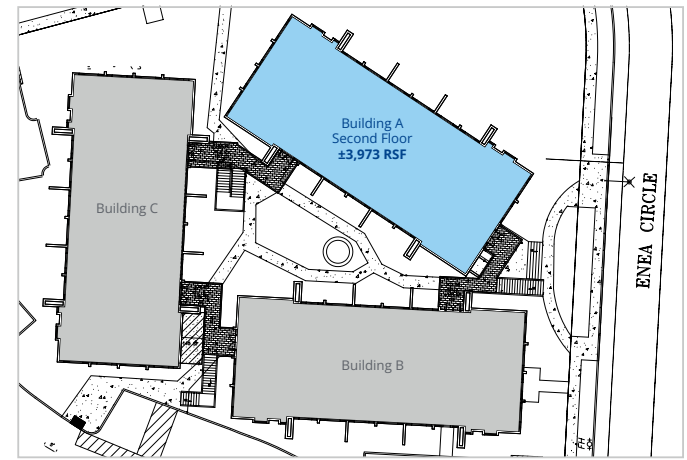


Site Plan

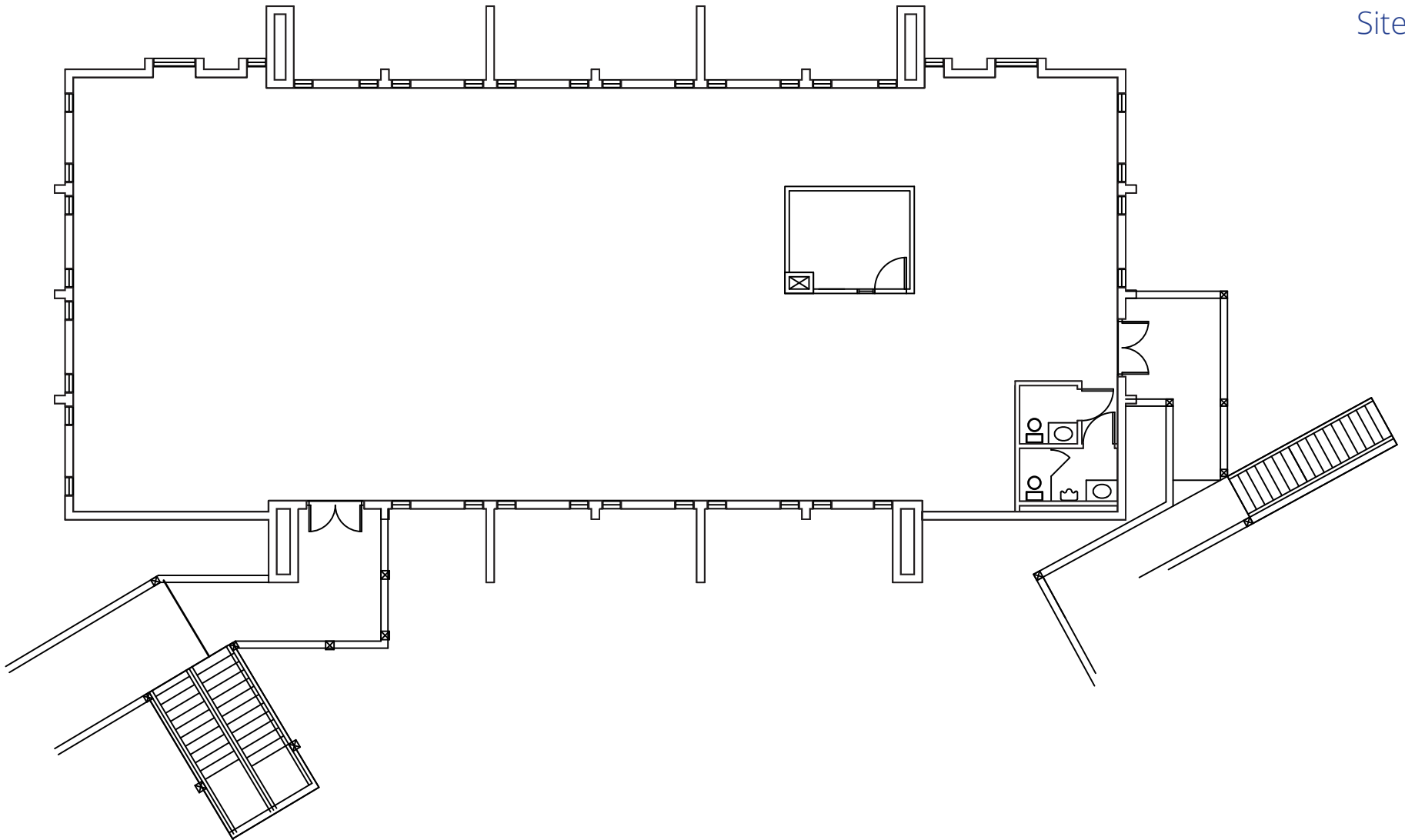


1450 Civic Court, Bldg. A | Concord, CA

# Second Floor ±3,973 RSF



Site Plan



1450 Civic Court, Bldg. A

# Photo Gallery

Open Office



Open Office



Open Office

