

1 2 2 0

MARZEL'S, INC.

Diablo Oaks

For Lease | 1220 Oakland Boulevard, Walnut Creek, CA

Highlights

- Stunning Mount Diablo Views
- Newly renovated common areas and restrooms
- At the I-680 and Hwy 24 interchange
- Walk to downtown
- 0.5 miles from Walnut Creek BART station
- 30 day delivery
- Free covered reserved parking

Available Space

- Suite 210 | ±3,365 RSF
- Suite 300 | ±3,362 RSF

Eric Erickson, SIOR

Senior Vice President
+1 925 279 5580
eric.erickson@colliers.com
CA Lic. 01177336

Larry Easterly

Executive Vice President
+1 925 279 4655
larry.easterly@colliers.com
CA Lic. 00958987

Diablo Oaks

For Lease | 1220 Oakland Boulevard, Walnut Creek, CA



Eric Erickson, SIOR
+1 925 279 5580
eric.erickson@colliers.com
CA Lic. 01177336

Larry Easterly
+1 925 279 4655
larry.easterly@colliers.com
CA Lic. 00958987



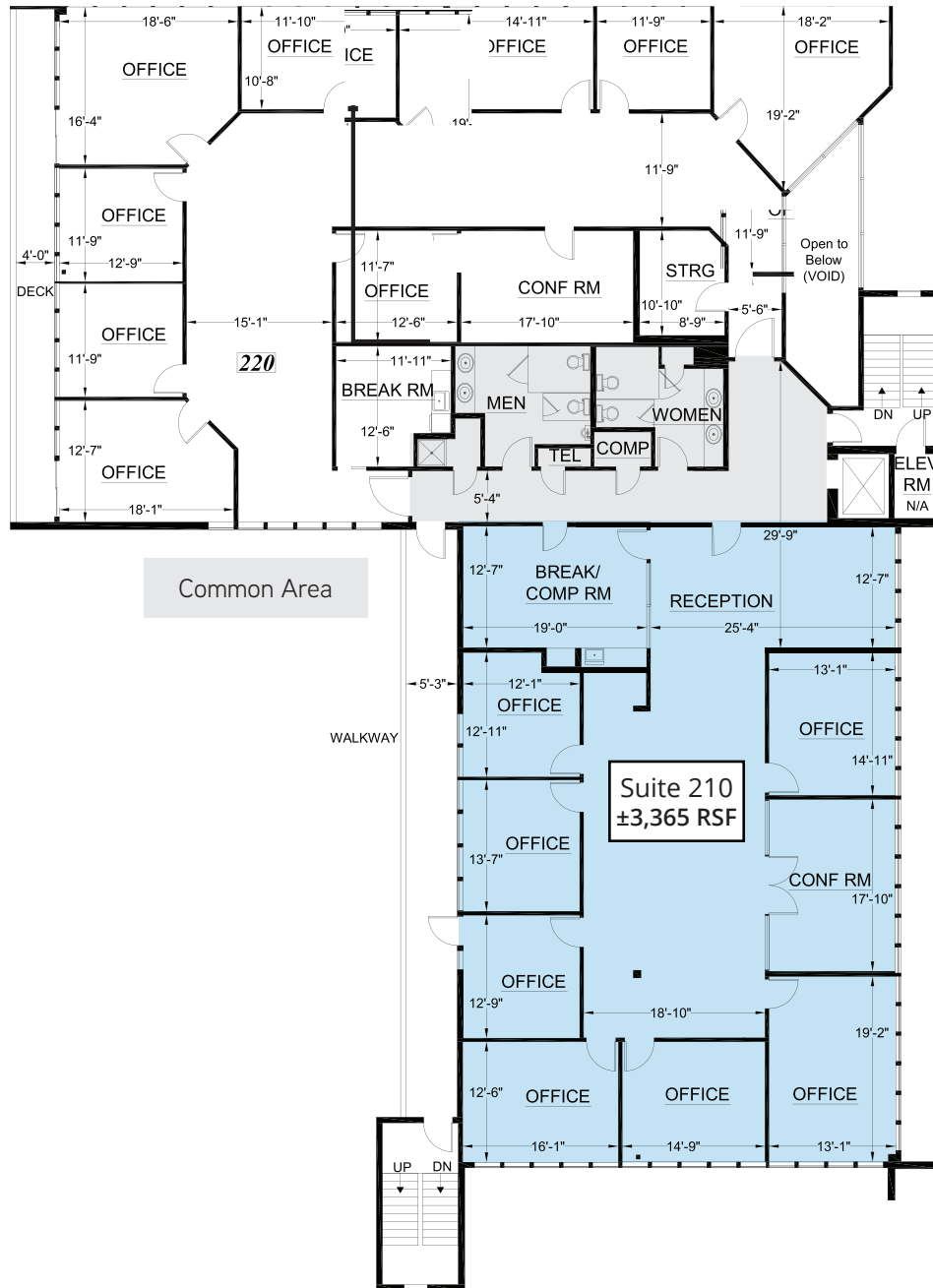
Copyright © 2024 Colliers.
Information herein has been obtained from sources deemed reliable, however its accuracy cannot be guaranteed. The user is required to conduct their own due diligence and verification.

Diablo Oaks

Colliers

For Lease | 1220 Oakland Boulevard, Walnut Creek, CA

Second Floor Available Space



Eric Erickson, SIOR
+1 925 279 5580
eric.erickson@colliers.com
CA Lic. 01177336

Larry Easterly
+1 925 279 4655
larry.easterly@colliers.com
CA Lic. 00958987

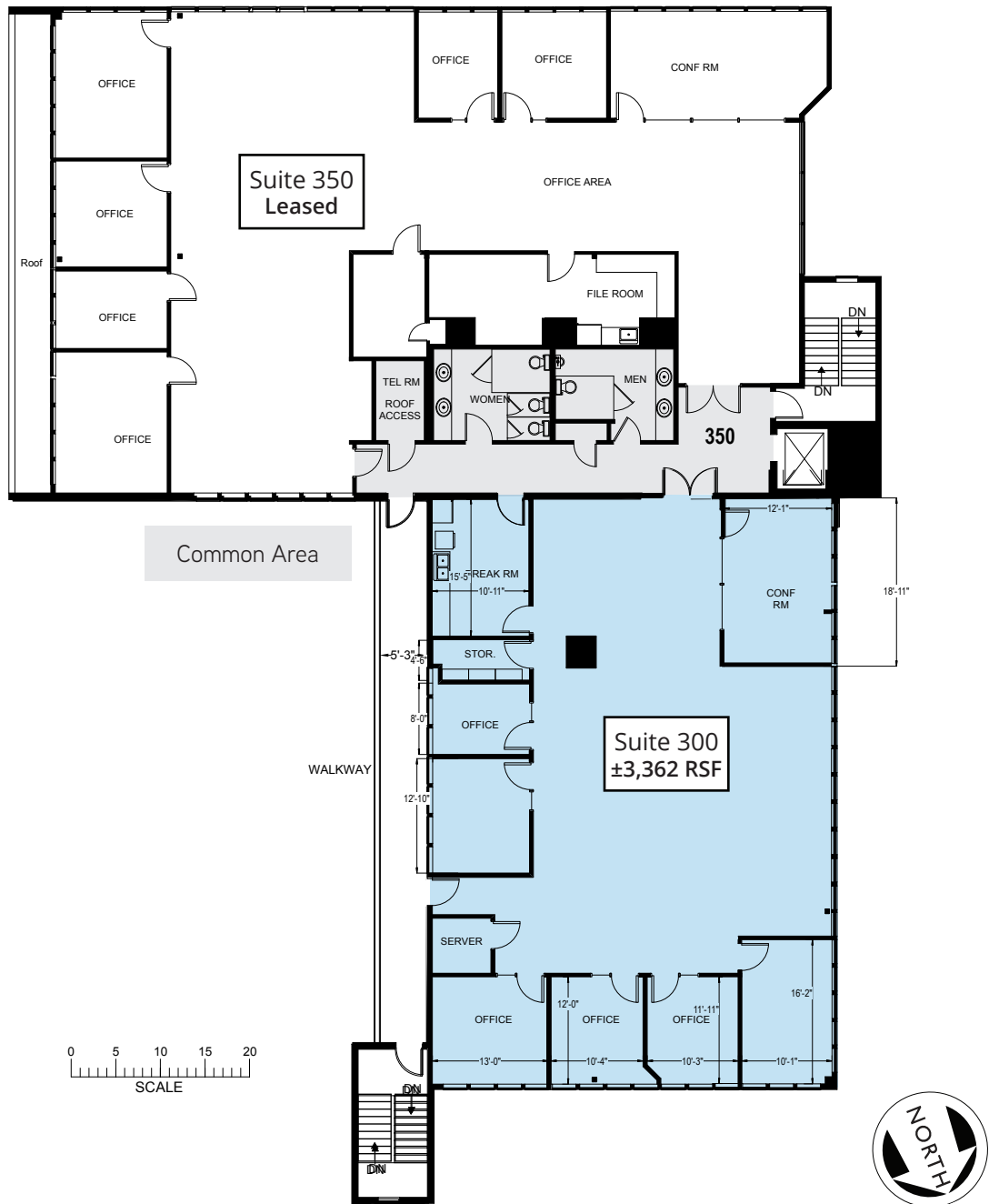
Copyright © 2024 Colliers.
Information herein has been obtained from sources deemed reliable, however its accuracy cannot be guaranteed. The user is required to conduct their own due diligence and verification.

Diablo Oaks

Colliers

For Lease | 1220 Oakland Boulevard, Walnut Creek, CA

Third Floor Available Space



Eric Erickson, SIOR
+1 925 279 5580
eric.erickson@colliers.com
CA Lic. 01177336

Larry Easterly
+1 925 279 4655
larry.easterly@colliers.com
CA Lic. 00958987

Copyright © 2024 Colliers.
Information herein has been obtained from sources deemed reliable, however its accuracy cannot be guaranteed. The user is required to conduct their own due diligence and verification.