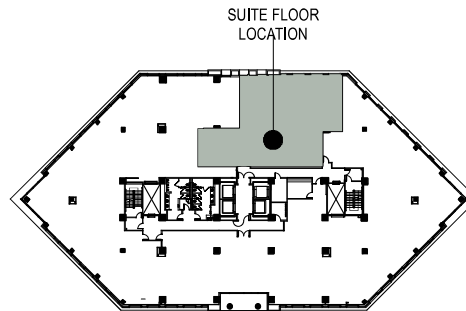


**SUITE 320**



**KEY PLAN FLOOR - 3**



Colliers International  
 1850 Mount Diablo Boulevard, Suite 200  
 Walnut Creek, CA 94596 | United States  
 www.colliers.com

LEASING AGENT

**Scott Ellis**  
 (925) 279-5575

scott.ellis@colliers.com

**Matt Hurd**  
 (925) 279-5567

matt.hurd@colliers.com

**Eric Erickson**  
 (925) 279-5580

eric.erickson@colliers.com

**METROPLEX  
 CENTRE**

1401 Willow Pass Road  
 Concord, CA

Third Floor

Owned and Managed by  
**Sierra Pacific  
 Properties, Inc.**

Approximate Area Calculations  
 Subject To Verification:

3,874 rsf

As-built Plan To Be Verified

This information displayed while not guaranteed has been secured by sources we believe to be reliable. This information is subject to errors & omissions. Any tenant should conduct their own investigation.

Plan Revision - 8-12-24